



4/49-53 Vermont Street Sutherland, NSW

2 2 1

Let Me Entertain You!

Set on the ground floor, with a northerly aspect, this stylishly appointed apartment boasts size and space that is rarely found in strata living. If you enjoy entertaining friends and family, you will love the seamless flow from the open plan living/dining and kitchen to the expansive outdoor entertaining area.

Features include:

- * Over-sized main bedroom with built-in robes
- * Bed two with built-in robe, en-suite and private courtyard
- * Sleek kitchen with stone benches, ample cupboard space + gas cooking
- * Stylish main bathroom with adjacent internal laundry
- * Built-in study nook off the living and dining area
- * Single lock up garage in a secure basement

This pet-friendly complex is set just 600m to Sutherland Station and walking distance to Sutherland's myriad of amenities including gyms, cafes, parks, pools & schools. This increasingly popular suburb is on the doorstep of the Royal National Park, a 15 minute drive to Cronulla Beach and a 30 minute train trip to Sydney CBD.

\$700,000 - \$739,000

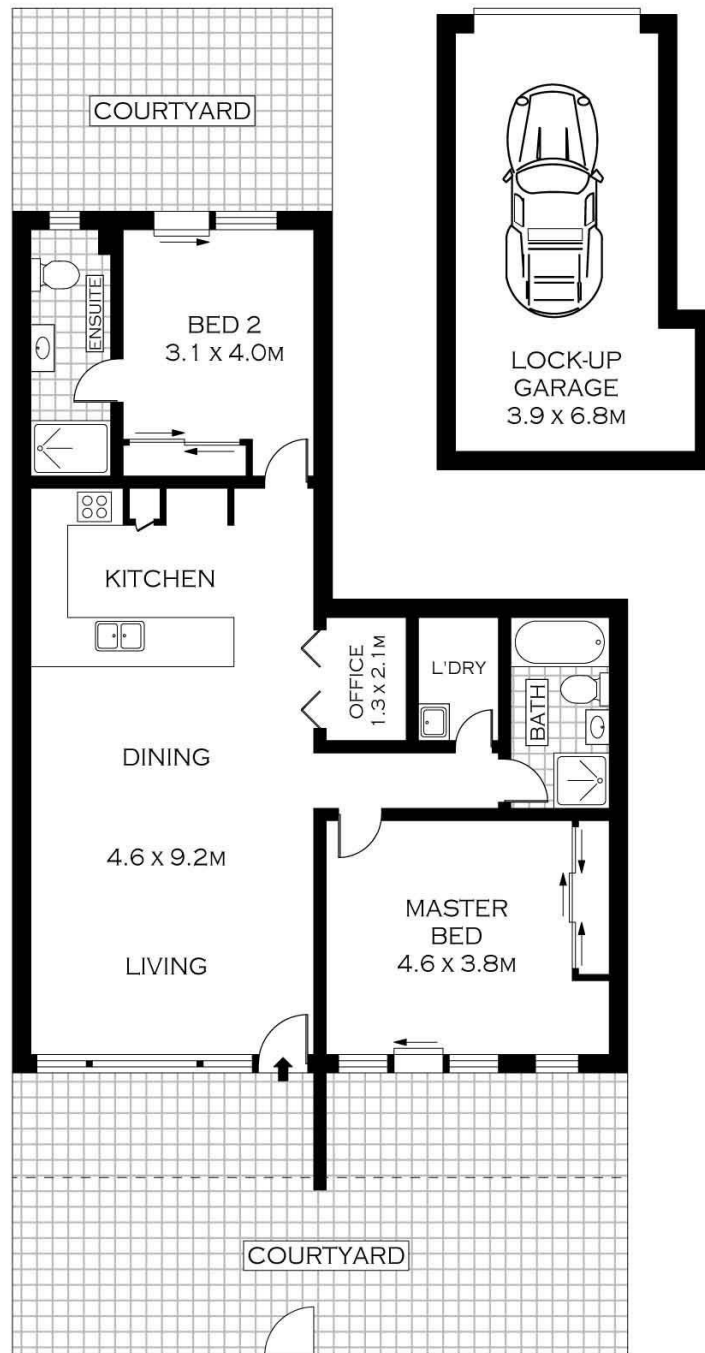
Type : Apartment
Sold Date : Monday, 29th January 2018
Land : 174 m2
Building Size : 174 m2

Hill & Viteri Property

02 9545 2220

Sebastian Viteri

0295452220



4/49-53 Vermont Street, Sutherland NSW