



9 Minerva Street KIRRAWEE, NSW

2 1 1

Sold by The Team at Century 21 Hill & Viteri

\$1,000,000.00

Sutherland Shire Real Estate Agents Century 21 Hill & Viteri have done it again with the sale of 9 Minerva St Kirrawee. A number of qualified buyers missed out and are looking to purchase in the surrounding area. If you are considering selling property in the area contact the team on 9545 2220 and discover the difference.

Type : House
Sold Date : Monday, 26th September 2016
Land : 626 m2

Positioned on a large level 626m2 corner block, this two bedroom dwelling offers a flexible layout with spacious original interiors and a Northerly facing yard. The property would suit investors, developers or those looking to build their dream home or a duplex (S.T.C.A)

Property Highlights;

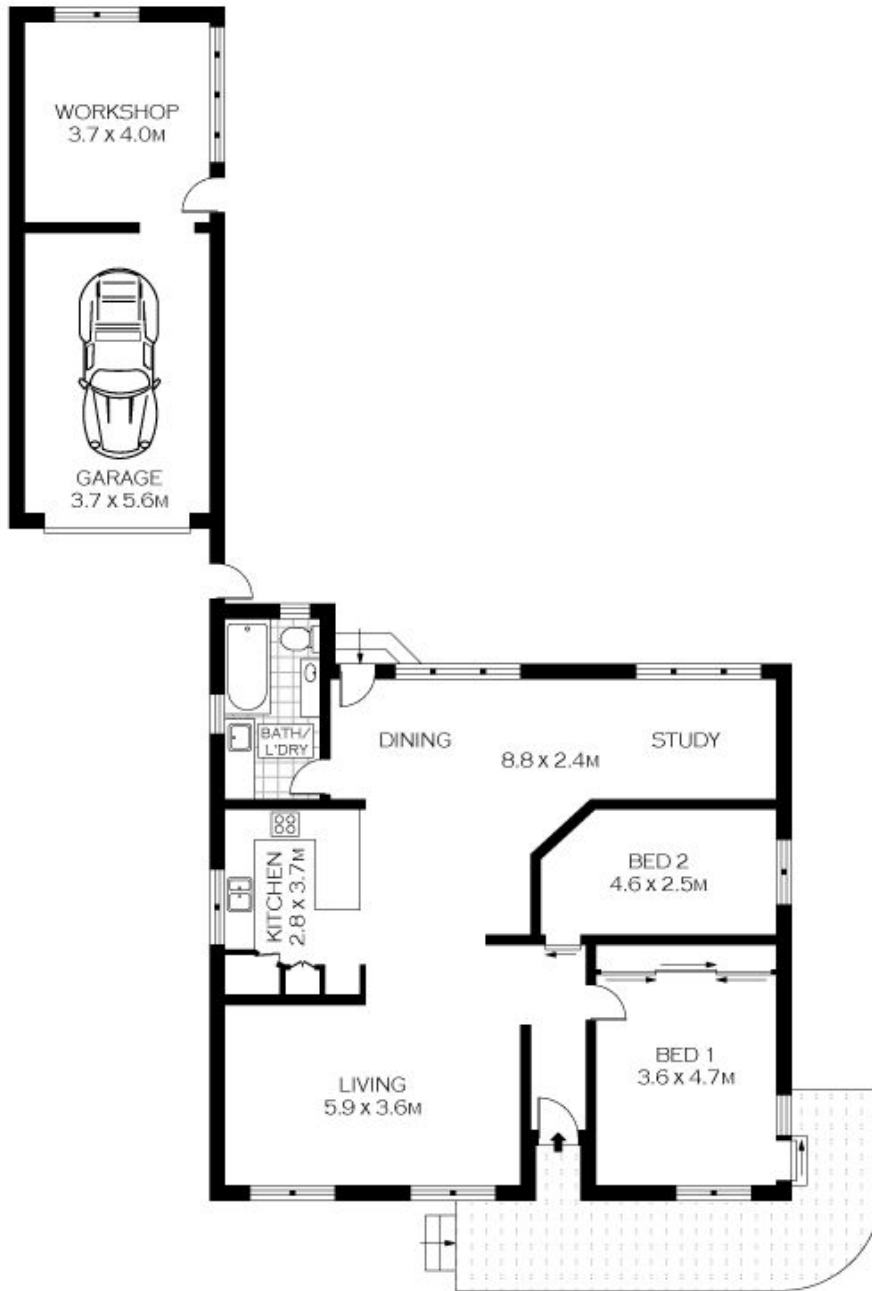
- *Level block 20.32m x 28.105 total 626m2, Zoned R2 Low Density Residential
- *Spacious and easy flow open plan family and dining room with adjacent study
- *Two Bedrooms; master with large built in robe plus outdoor access
- *Oak timber kitchen with gas cooking, dishwasher and ample cupboard space
- *Northerly facing yard with inground pool and single garage featuring workshop at rear

Leigh Anderson

0499626921

The property is located just a short drive to Kirrawee and Sutherland train station

www.hillandviteriproperty.com.au



GROUND FLOOR



PLANS SHOWN ONLY INDICATIVE OF LAYOUT. DIMENSIONS ARE APPROXIMATE.
Floor plans by www.nemsozstralia.com
Ref. No. 10629



9 MINERVA STREET

KIRRAWEE

9 Minerva Street, KIRRAWEE NSW