



16 Tecoma Street HEATHCOTE, NSW

 4  3  1

Impressive Property

This property is one to view this week, set in the tight sought after pocket of East Heathcote is this stunning sophisticated home. The property boasts large entertaining area's and a well-appointed studio granny flat at the rear of the property. With all this set just walking distance to local parks, schools, The Royal National Park and Heathcote train station.

Features Include:

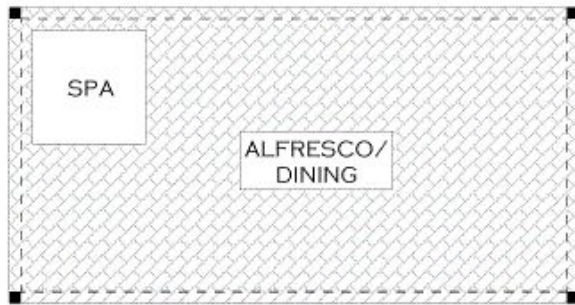
- * Open plan living / dining with air-conditioning, high ceilings and great natural light throughout
- * Elegant Kitchen with breakfast bar, stainless steel appliance and dishwasher
- * Four large bedrooms, all with built-in wardrobes and ceiling fans; master with ensuite
- * Spacious family room with air-con that opens out to the huge covered deck fitted with café style blinds
- * Large level yard complete with studio granny flat and covered formal alfresco dining
- * Single carport, Added bonus of car access to the backyard.
- * All located in a quiet street with the park directly behind.

\$1,000,000.00

Type : House
Sold Date : Saturday, 25th March 2017
Land : 770 m2

Leigh Anderson

0499626921



GROUND FLOOR



PLANS SHOWN ONLY INDICATIVE OF LAYOUT. DIMENSIONS ARE APPROXIMATE.
Floor plans by www.ramaustola.com
Ref No: 11323



16 TECOMA STREET,

HEATHCOTE

16 Tecoma Street, HEATHCOTE NSW