

6 Lilac Street Loftus, NSW

Opportunity Knocks

This single level cottage is blessed with a north easterly aspect. Set in a quiet yet convenient pocket of Loftus, on 625.99m² the property is zoned R2 "Low Density". Ideal for redevelopment the lot has a 15.32m frontage and falls to the street.

Total Land Size: 625.99m²

Frontage: 15.31m

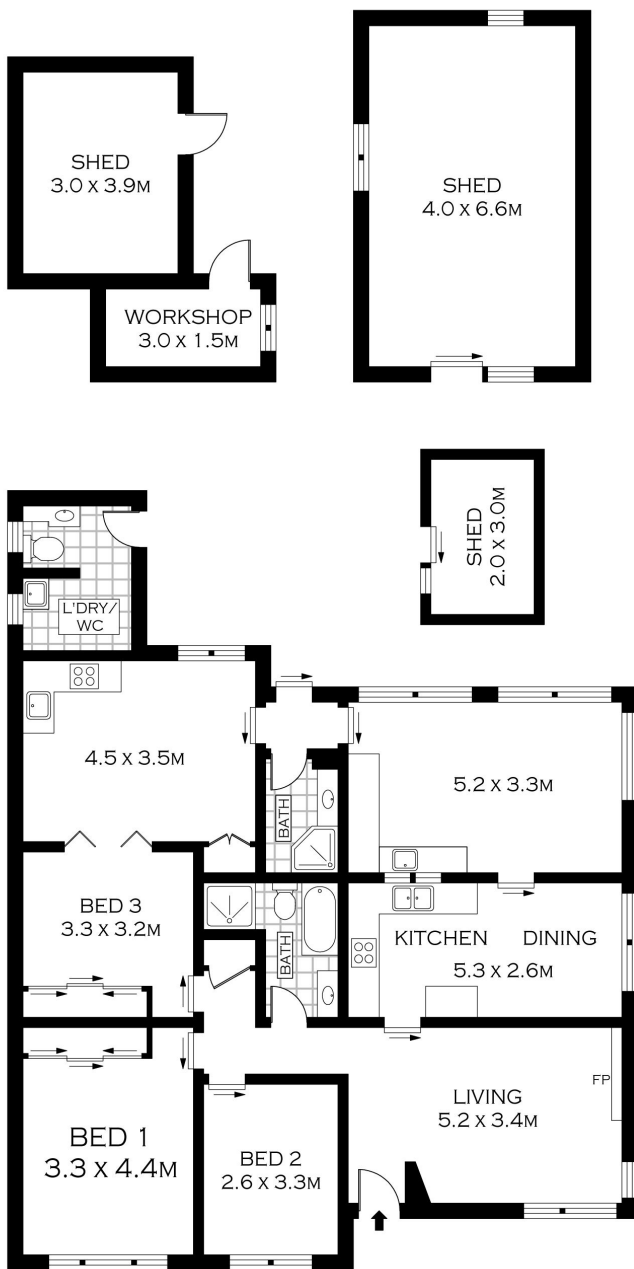
Depth: 41.91m

If you are considering building your dream home or possibly a duplex this property could be the one you are looking for. Contact our team on 9545 2220 for a private inspection.

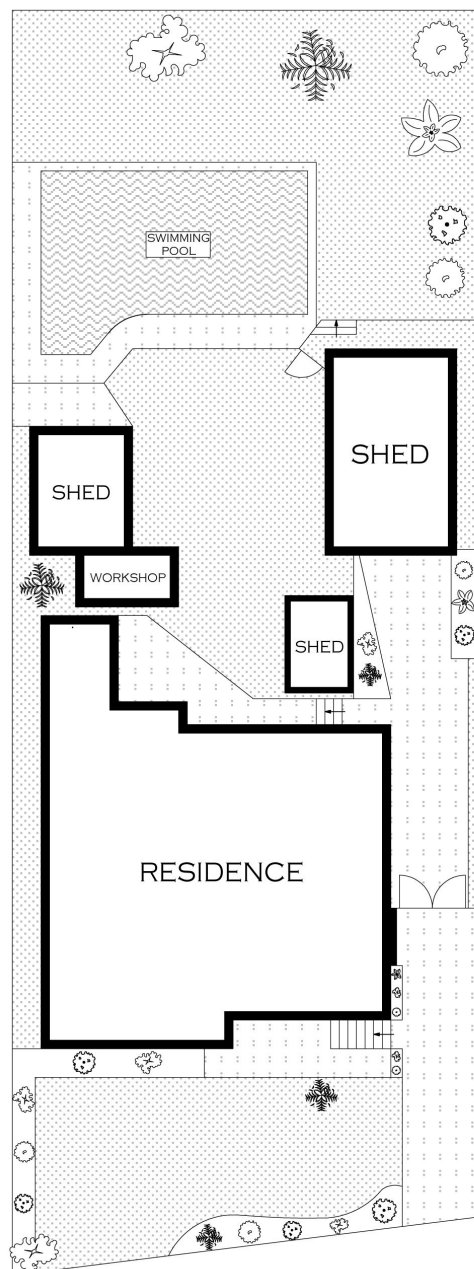
Type : House
Sold Date : Wednesday, 19th September 2018
Land : 625.99 m²

Sebastian Viteri

0295452220



GROUND FLOOR



SITE PLAN
(NOT TO SCALE)



PLANS SHOWN ONLY INDICATIVE OF LAYOUT. DIMENSIONS ARE APPROXIMATE.
Floor plans by www.remaustralia.com
Ref. No. 12685

Hill & Viteri
PROPERTY

9545 2220
hillandviteriproperty.com.au



6 LILAC STREET

LOFTUS

6 Lilac Street, Loftus NSW