



9/602-608 Princes Highway Kirrawee, NSW

2 1 1

Sold by the team at Hill & Viteri Property.

\$550,000.00

"Hill & Viteri Property have done it again with the sale of 9/602-608 Princes Highway . A number of qualified buyers missed out and are looking to purchase in the surrounding area. If you are considering selling property in the area contact the team on 9545 2220 and discover the difference."

Type : Unit
Sold Date : Tuesday, 14th August 2018

NOTE: ACCESS TO THE UNIT IS VIA REAR 59-61 FLORA STREET

This north facing, ground floor apartment offers a wonderful opportunity to enter the property market for first home buyers. The central location would also suit those downsizing or make a great addition to your investment portfolio.

Features Include:

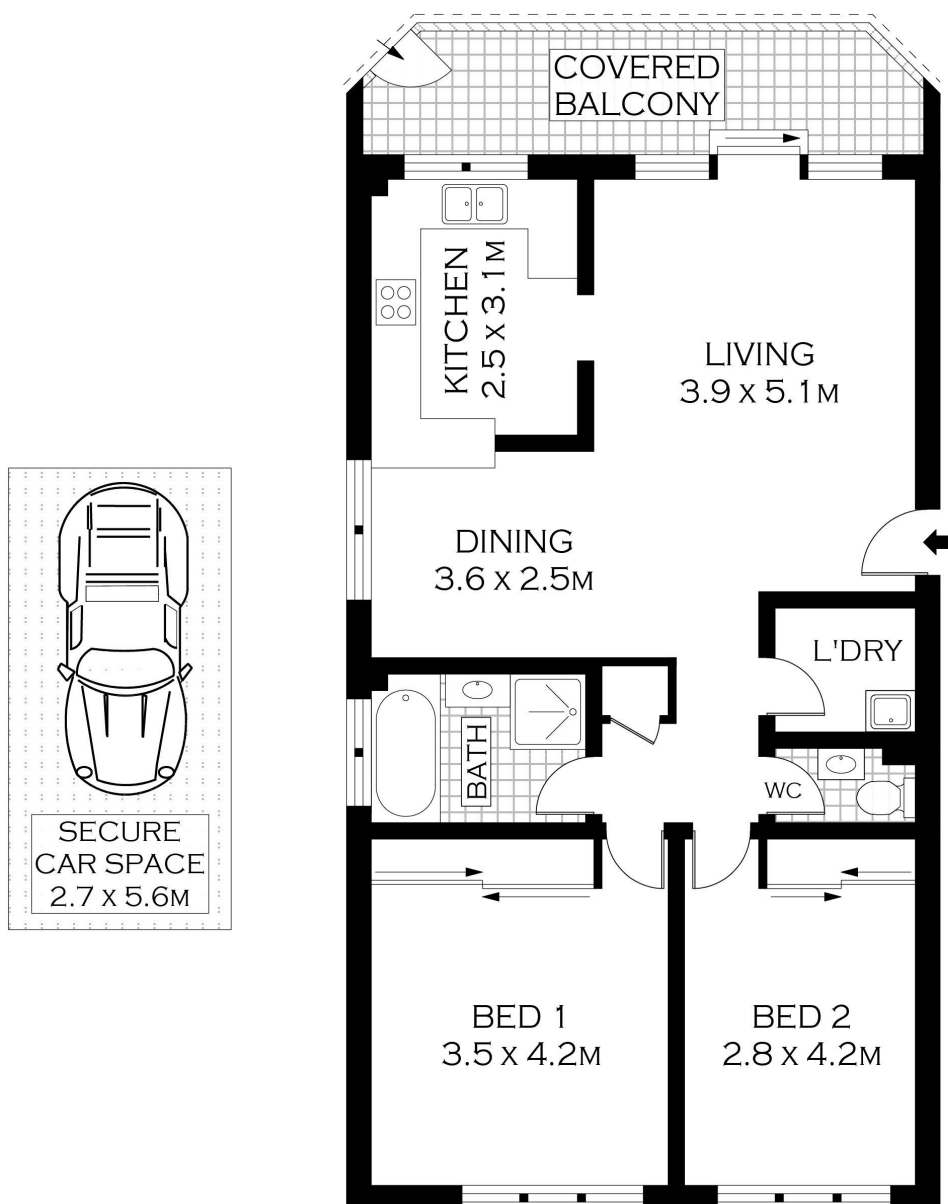
- Two bedrooms; both with built-in robes
- Sunny north-facing balcony with leafy outlook
- Original but well-maintained kitchen & bathroom
- Lock up garage in security parking area

Hill & Viteri Property

02 9545 2220

Sebastian Viteri

0295452220



GROUND FLOOR



PLANS SHOWN ONLY INDICATIVE OF LAYOUT. DIMENSIONS ARE APPROXIMATE.
Floor plans by www.remaustralia.com
Ref. No. 12766

Hill & Viteri
PROPERTY

9545 2220
hillandviteriproperty.com.au

9/602-608 PRINCES HWY

KIRRAWEE

9/602-608 Princes Highway, Kirrawee NSW