



15 Bandain Avenue Kareela, NSW

4 2 2

Family Entertainer

Nestled in a quiet and leafy pocket of the popular suburb of Kareela, this full brick home sits on a level block of land. Designed for entertaining, it features a functional, contemporary kitchen plus open plan living & dining which flows out to an outdoor entertaining area.

Features include:

- Four generously sized bedrooms; three with built-in robes
- Two separate living areas, one at each end of the house
- In-ground salt water pool with bush outlook and outdoor entertaining area
- Luxury kitchen with stone benches, dishwasher and plenty of storage space
- Stylishly appointed main bathroom
- Other features include: Hardwood flooring, 12 solar-panels and ducted air conditioning throughout

Immaculately presented, this fashionable abode offers quality finishes coupled with a functional floor plan that is ideally suited to a young family or those with teenage kids. The property falls in the highly regarded Kareela Public School catchment & is only a short s

AUCTION

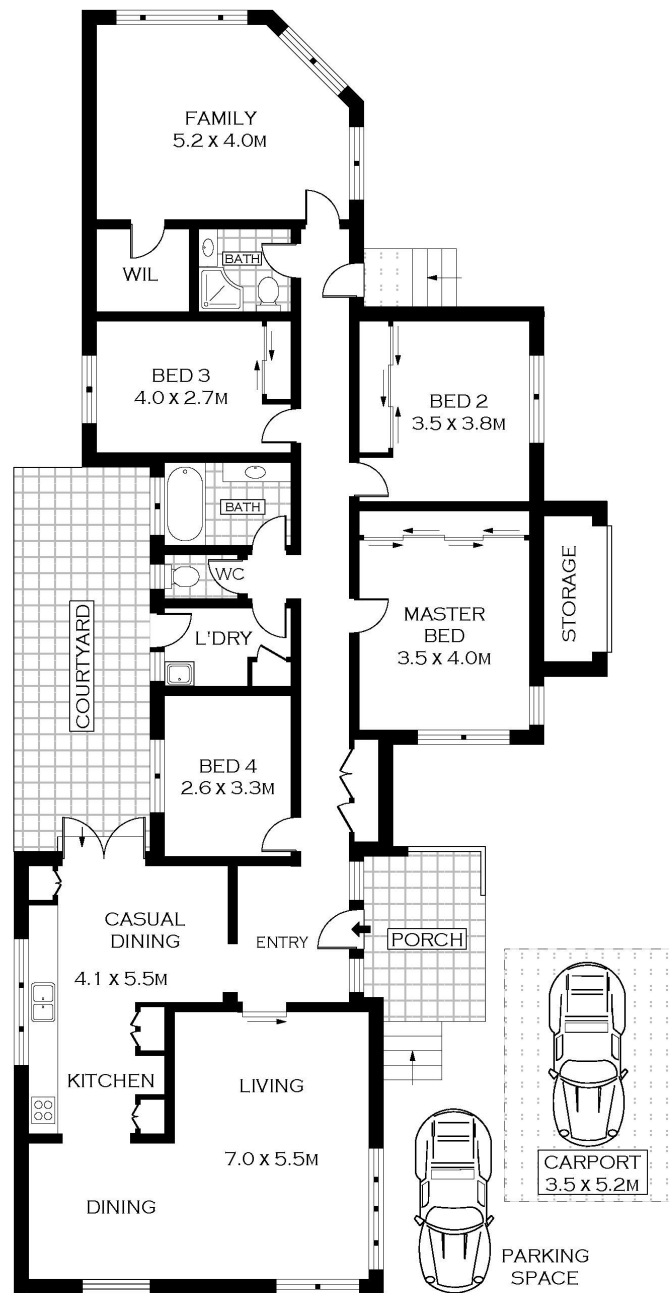
Type : House
Sold Date : Saturday, 3rd November 2018
Land : 657.6 m2

Hill & Viteri Property

02 9545 2220

Sebastian Viteri

0295452220



GROUND FLOOR



0 1 2 3 5
SCALE (METRES)

PLANS SHOWN ONLY INDICATIVE OF LAYOUT. DIMENSIONS ARE APPROXIMATE.
Floor plans by www.remaustralia.com
Ref. No:12914

Hill & Viteri
PROPERTY

9545 2220
hillandviteriproperty.com.au

15 BANDAIN AVENUE

KAREELA

15 Bandain Avenue, Kareela NSW