



26/602 Princes Highway Kirrawee, NSW

 2  1  1

North Facing Convenience and Ease

Access to this apartment is via rear of 59-61 Flora Street

Perfect for those seeking convenience and ease of living. This well-appointed north facing apartment is equally appealing to first home buyers, young families or investors. It is located within a walk to Kirrawee train station, cafes, restaurants and local amenities.

Features include:

- Two bedrooms with built in robes and ceiling fans
- Spacious entertainers' balcony with a leafy outlook
- Well-appointed North to South and East facing windows to enjoy the breeze
- Separate internal laundry, linen closet in the hallway
- Well maintained kitchen with an abundance of storage and bench space
- Security complex with a single lock up garage
- Immaculate and neat bathroom with separate bath tub

Located only moments to Kirrawee Shopping Village and the forthcoming South Village Precin

\$525,000

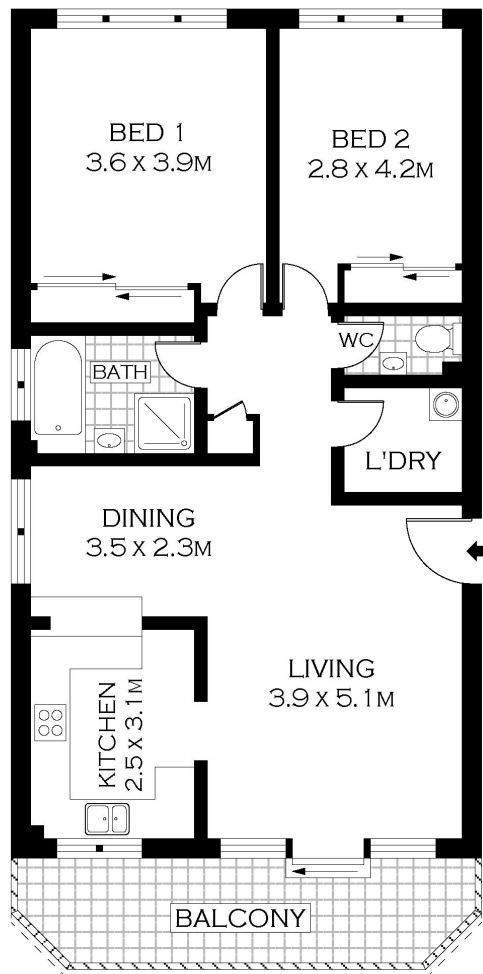
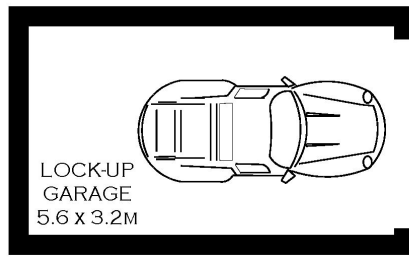
Type : Unit

Sold Date : Sunday, 11th November 2018

Sebastian Viteri

0295452220

www.hillandviteriproperty.com.au



FIRST FLOOR



PLANS SHOWN ONLY INDICATIVE OF LAYOUT. DIMENSIONS ARE APPROXIMATE.
Floor plans by www.remaustralia.com
Ref. No: 12943

Hill&Viteri
PROPERTY

9545 2220
hillandviteriproperty.com.au



26/602 PRINCES HIGHWAY

KIRRAWEE

26/602 Princes Highway, Kirrawee NSW