



G02/26 Merton Street Sutherland, NSW

 2  2  1

## Lifestyle & Convenience at 'Rosa Bullata'

If you are looking for low maintenance living coupled with convenient access to transport and amenities this near new villa style apartment could be for you.

The property offers:

- Two bedrooms, both with built-in robes
- Stylishly appointed main and ensuite bathrooms
- Spacious open plan living and dining area
- Striking kitchen with stone benches and Miele appliances
- Covered outdoor entertaining + grassed courtyard
- Parking in a secure basement + storeroom
- Air conditioning; natural gas cooking and heating

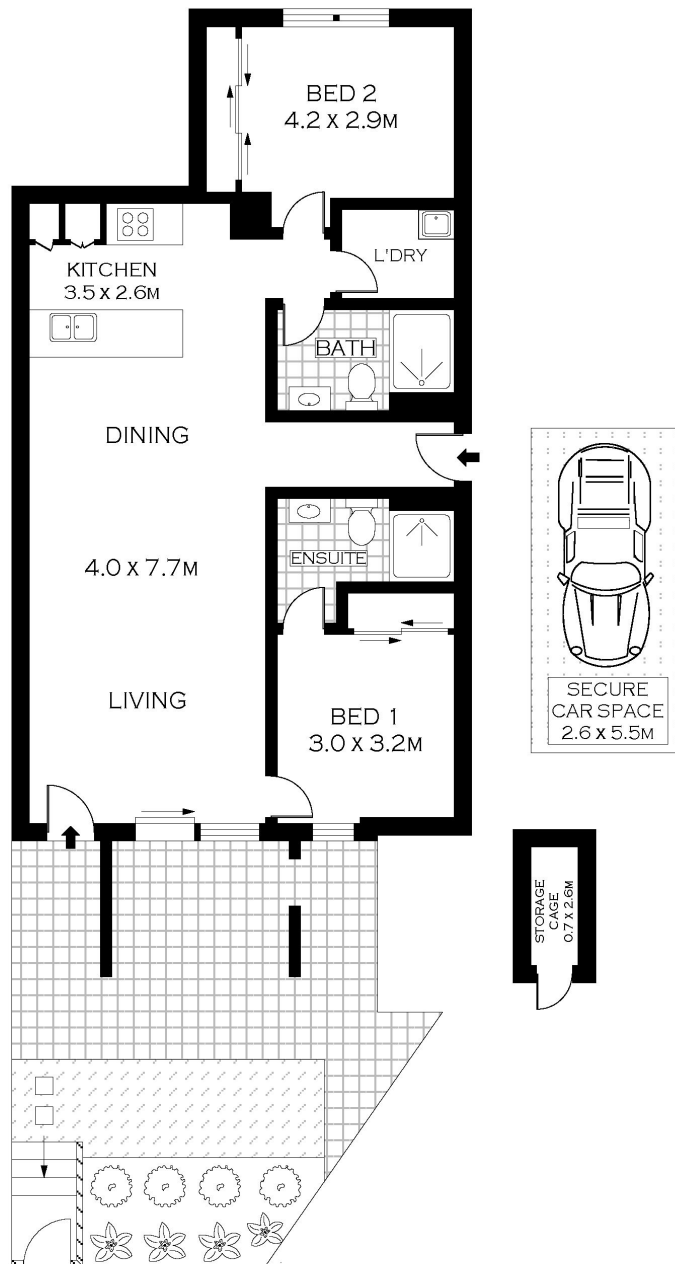
Designed by award winning architects Candalepas Associates and developed by Cuzeno, this boutique complex is distinctive in its architectural form and enjoys a wonderfully convenient setting just a brief walk to nearby Sutherland village shops and cafes, a number of local schools and the train station, affording commuters easy CBD access.

\$685,000

**Type** : Apartment  
**Sold Date** : Tuesday, 11th December 2018  
**Land** : 137 m2  
**Building Size** : 137 m2

**Sebastian Viteri**

0295452220



GROUND FLOOR



PLANS SHOWN ONLY INDICATIVE OF LAYOUT. DIMENSIONS ARE APPROXIMATE.  
Floor plans by www.remaustralia.com  
Ref. No. 12994

Hill & Viteri  
PROPERTY

9545 2220  
hillandviteri@property.com.au



G02/26 MERTON STREET

SUTHERLAND

**G02/26 Merton Street, Sutherland NSW**