



1/49-53 Vermont Street Sutherland, NSW

 2  2  2

Villa Style Apartment

This stylishly appointed villa style apartment boasts size and space that is rarely found in strata living. Enjoying three aspects, this property offers a covered terrace to the north and courtyard to the south that both wrap around to the east giving you great natural light and ventilation.

Features include:

- Sleek kitchen with stone benches, ample cupboard space
- Generous master bedroom with en-suite
- Stylishly appointed main bathroom + internal laundry
- Open plan living and dining area + study nook
- Double garage with ample storage room
- Other features include split system AC and gas cooking

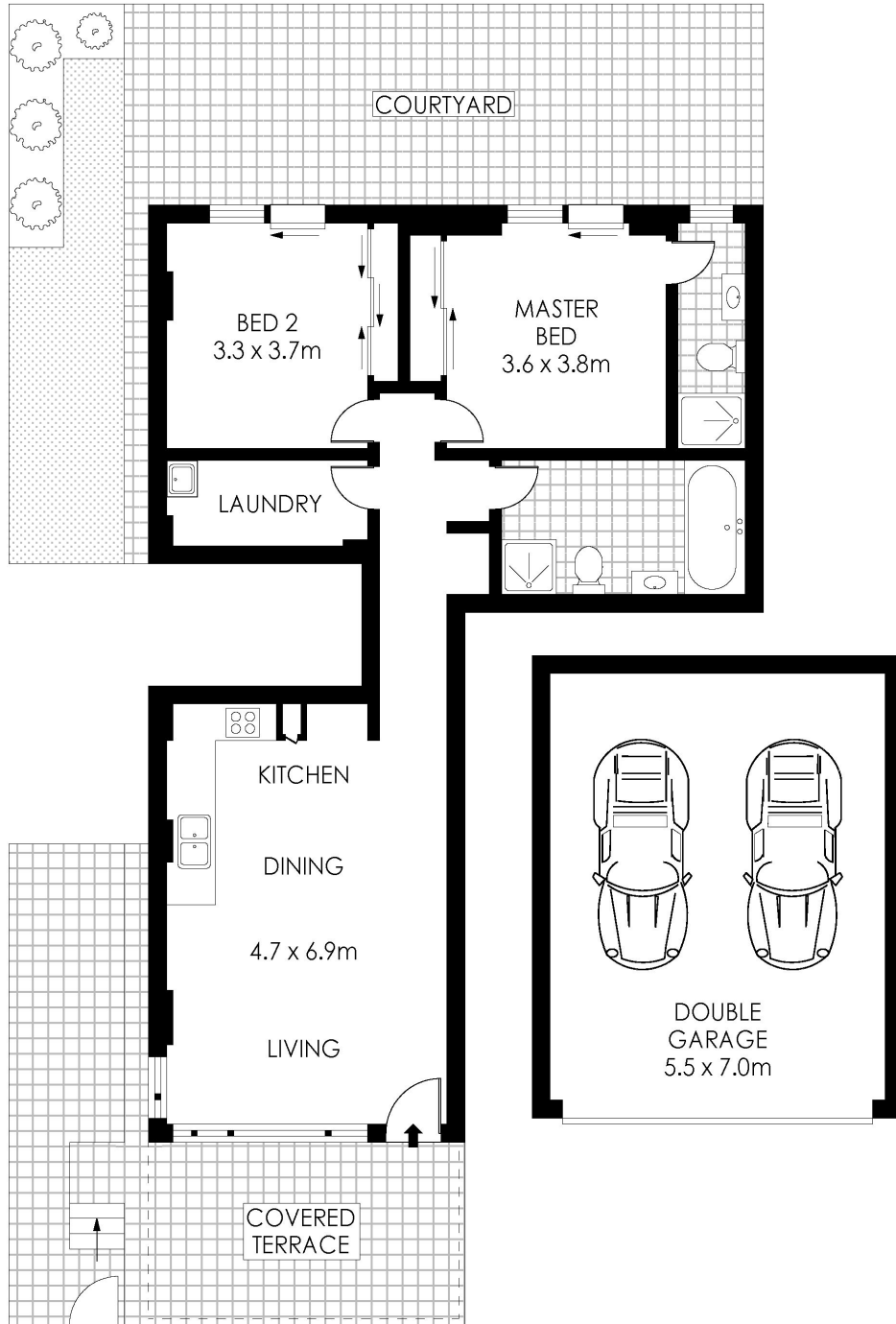
This pet-friendly complex is set just 600m to Sutherland Station and walking distance to Sutherland's myriad of amenities including gyms, cafes, parks, pools & schools. This increasingly popular suburb is on the doorstep of the Royal National Park, a 15 minute drive to Cronulla Beach and a 30 minute train trip to Sydney CBD.

\$649,950

Type : Unit
Sold Date : Tuesday, 11th December 2018
Land : 207 m2

Sebastian Viteri

0295452220



GROUND FLOOR



PLANS SHOWN ONLY INDICATIVE OF LAYOUT. DIMENSIONS ARE APPROXIMATE.
Floor plans by www.remaustralia.com
Ref. No: 13007

Hill & Viteri
PROPERTY



9545 2220
hillandviteriproperty.com.au

1/49-53 VERMONT STREET

SUTHERLAND

1/49-53 Vermont Street, Sutherland NSW