



5/64-66 Manchester Road Gymea, NSW

3 2 2

## Location Location Location

You will be hard placed to find better value for money with the features and location this property has to offer. Located at the rear of a small boutique block of 6, this beautifully presented property is more like a house than a townhouse. It's light-filled interior with a free-flowing floor plan boasts a private outdoor space to entertain guests not usually found in conventional strata living.

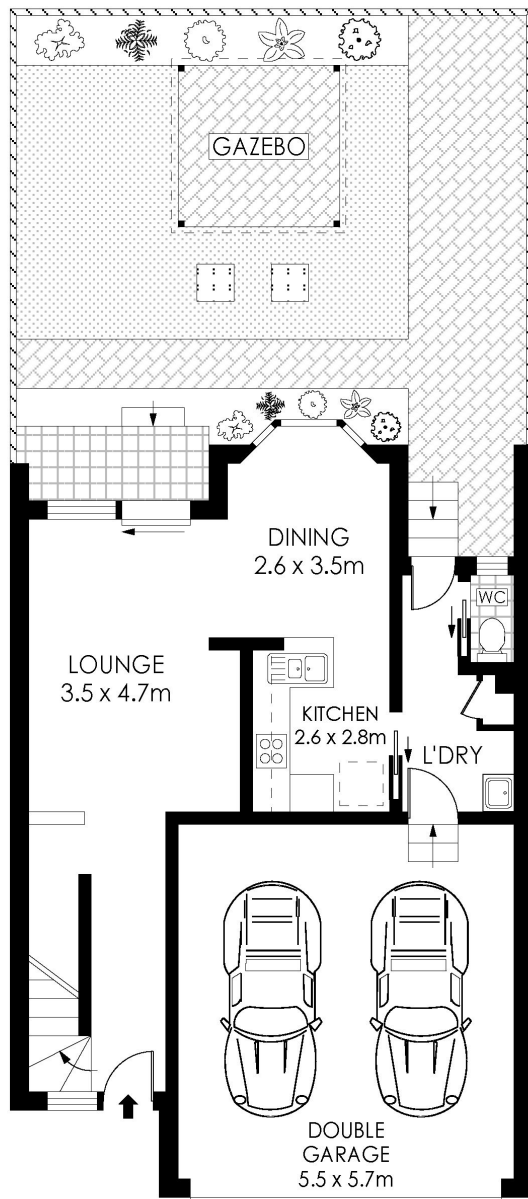
### Features Include:

- Renovated kitchen with quality European appliances
- Adjoining lounge and dining area
- Large bedrooms with built in robes
- Main bedroom with ensuite and walk-in wardrobe
- Main bathroom with separate bath & shower
- Internal laundry with separate w/c
- Double lock up automatic garage with internal access
- Sunny north facing rear garden
- Other features include: Gazebo, plenty of storage and Air-Conditioning

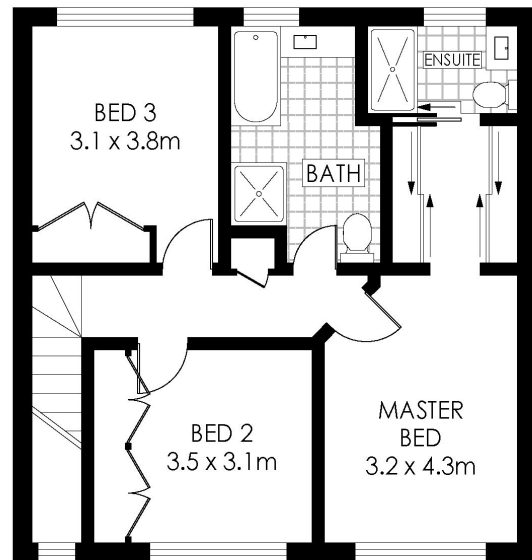
\$799,000

**Type** : Townhouse  
**Sold Date** : Friday, 8th March 2019  
**Land** : 202 m2

**Derin Hill**  
0295452220



**GROUND FLOOR**



**UPPER FLOOR**



PLANS SHOWN ONLY INDICATIVE OF LAYOUT. DIMENSIONS ARE APPROXIMATE.  
Floor plans by [www.remaustralia.com](http://www.remaustralia.com)  
Ref. No: 13055

Hill & Viteri  
PROPERTY

9545 2220  
[hillandviteriproperty.com.au](http://hillandviteriproperty.com.au)

5/64-66 MANCHESTER ROAD

GYMEA

**5/64-66 Manchester Road, GyMEA NSW**