



27/500 President Avenue Sutherland, NSW

 2
  1
  1

Elegant North Facing Apartment

A great lifestyle opportunity awaits. Situated within approximately 600m from South Village Kirrawee and 800m to Sutherland precinct and conveniences. Wonderfully maintained, this apartment would suit the most discerning buyer.

Features Include:

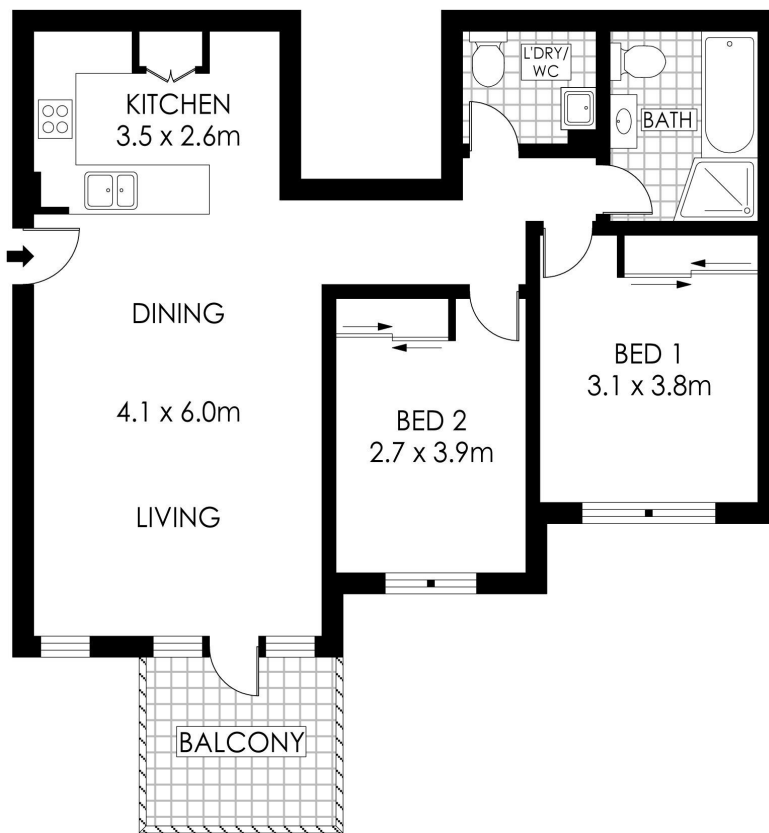
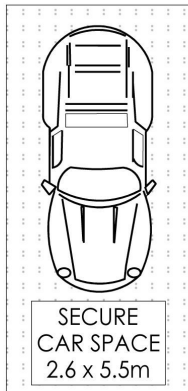
- Open plan living and dining area flow out to a sun drenched north facing balcony
- No common walls, secure complex, car space and storage room
- Chic kitchen equipped with stone benchtops, gas cooking, dishwasher and stainless-steel appliances
- Internal laundry with additional W/C
- Generous fully tiled bathroom
- Two double sized bedrooms, both featuring built in robes
- Within easy access to the National Park and further amenities the park provides
- Wonderful first home or favourable investment
- Lift access from the ground floor and basement car parking

For Saturday's open for inspection we will be providing visitor parking in the basement of

Type : Unit
Sold Date : Wednesday, 10th April 2019

Sebastian Viteri
 0295452220

Sebastian Viteri
 0295452220



FIRST FLOOR



SCALE (METRES)

PLANS SHOWN ONLY INDICATIVE OF LAYOUT. DIMENSIONS ARE APPROXIMATE.
Floor plans by www.remaustralia.com
Ref. No: 13083

Hill & Viteri
PROPERTY

9545 2220
hillandviteriproperty.com.au



27/500 PRESIDENTS AVENUE

SUTHERLAND

27/500 President Avenue, Sutherland NSW