



20/28-34 Leonay Street Sutherland, NSW

2 1 1

Ideal First Home or Investment

Freshly painted, this immaculately presented north facing apartment will suit the buyer who needs comfort and style. Centrally located within steps to all local amenities; this apartment is a must to inspect for first home buyers and investors alike!

Features Include:

- Open plan living & dining room with adjoining kitchen, features split system air conditioning
- Generous bedrooms, both featuring mirrored built-in wardrobes
- Large internal laundry with linen cupboard great for storage
- Balcony with leafy outlook
- Secure underground parking with a remote single lock up garage
- Security block in an ultra-convenient location, close to Sutherland schools, shops and transport
- Pet-friendly complex

Total Lot Size: 97m2 (Incl. garage)

\$525,000 - \$555,000

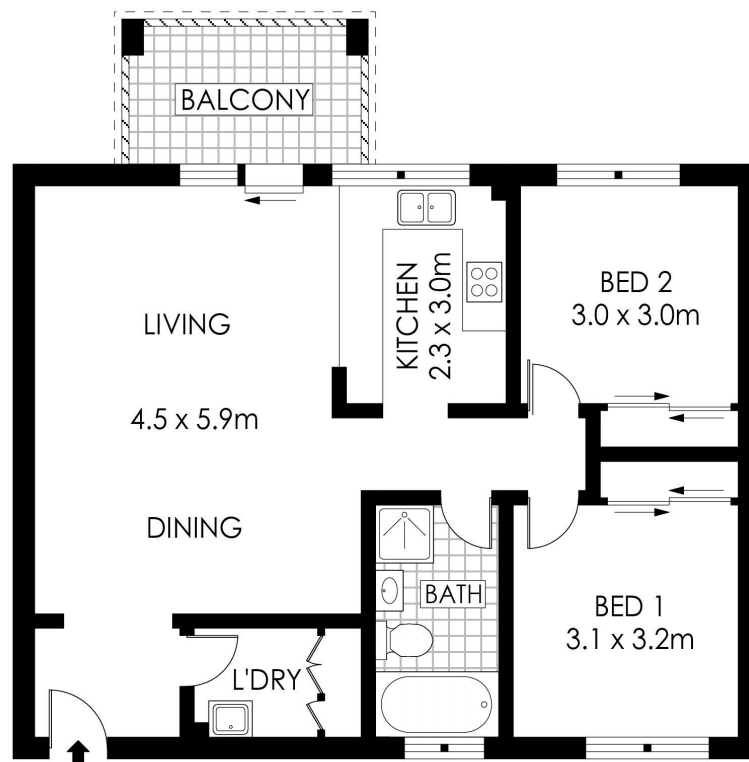
Type : Unit
Sold Date : Friday, 10th May 2019
Land : 97 m2

Hill & Viteri Property

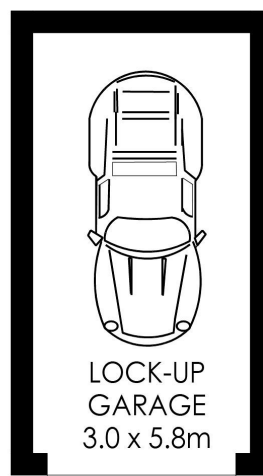
02 9545 2220

Sebastian Viteri

0295452220



SECOND FLOOR



PLANS SHOWN ONLY INDICATIVE OF LAYOUT. DIMENSIONS ARE APPROXIMATE.
Floor plans by www.remaustralia.com
Ref. No: 13281

Hill & Viteri
PROPERTY

9545 2220
hillandviteriproperty.com.au



20/28-34 LEONAY STREET

SUTHERLAND

20/28-34 Leonay Street, Sutherland NSW