



8 Roebourne Street Yarrawarra, NSW

4 3 2

## Quintessential Shire Living

Set over two levels, this brick residence is deceptively large and offers a versatile floor plan that could suit a teenage family, those working from home, or those looking to accommodate extended family members. Offering quintessential Shire living this abode is nestled in a bush setting yet is located conveniently to schools and shops.

### Features included:

- Four double bedrooms plus a study
- Three bathrooms including two en-suites
- Upstairs lounge & separate dining plus a downstairs rumpus area
- Gourmet kitchen boasting 40mm stone benches, lit glass splash backs, induction cooktop & self-cleaning oven
- Expansive outdoor entertaining space plus level yard ideal for kids or the furry family members
- Parking for several vehicles including room for a caravan or boat

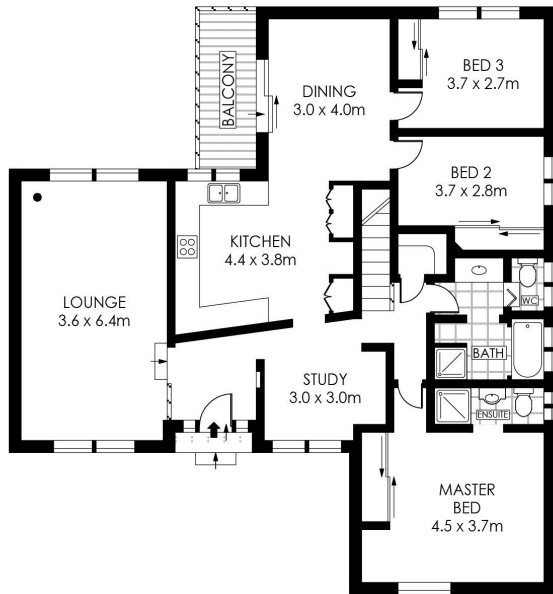
If you are looking for a home in tranquil, leafy surrounds, with privacy in a bush setting this could be the one for you.

## Preview

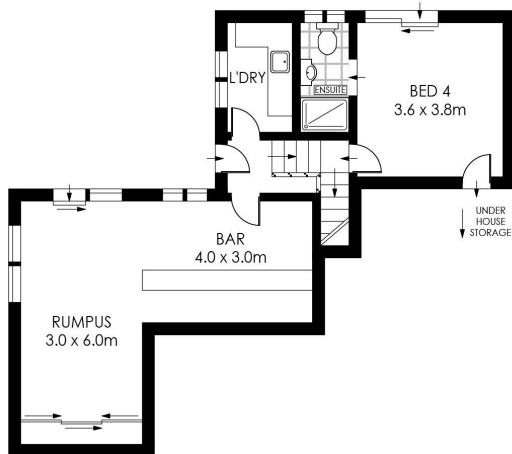
**Type** : House  
**Sold Date** : Friday, 31st May 2019

**Sebastian Viteri**

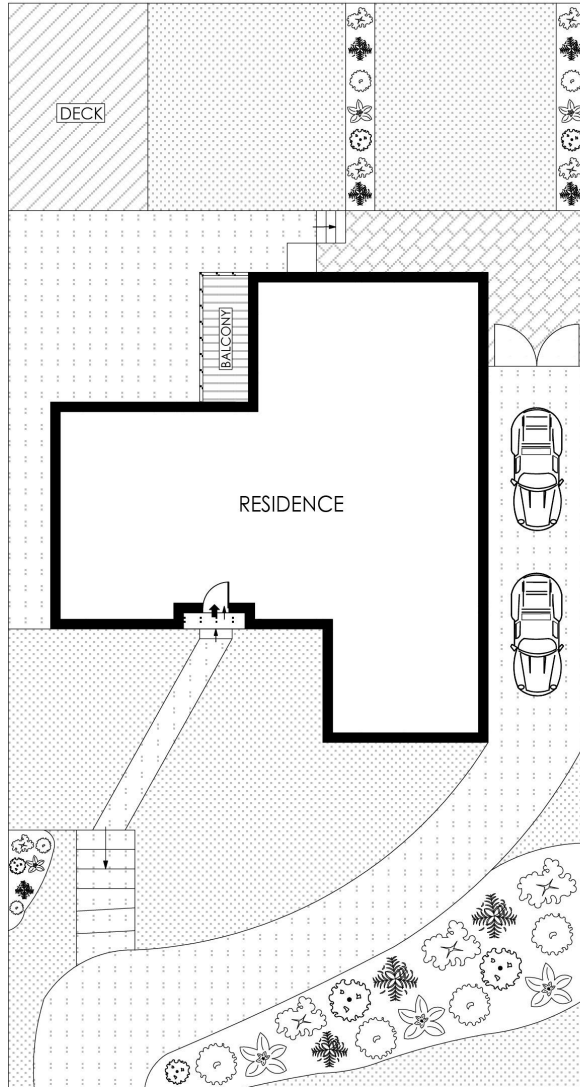
0295452220



ENTRY LEVEL



GROUND LEVEL



GROUND FLOOR  
(NOT TO SCALE)



PLANS SHOWN ONLY INDICATIVE OF LAYOUT. DIMENSIONS ARE APPROXIMATE.  
Floor plans by [www.remaustralia.com](http://www.remaustralia.com)  
Ref. No: 13312

Hill & Viteri  
PROPERTY

9545 2220  
[hillandviteriproperty.com.au](http://hillandviteriproperty.com.au)



8 ROEBOURNE STREET

YARRAWARRAH

8 Roebourne Street, Yarrawarra NSW