



14/149-151 Loftus Avenue Loftus, NSW

2 1 1

Convenient & Low Maintenance Lifestyle

A well presented home with ample space inside and a spacious undercover outdoor entertaining area overlooking a large yard. Situated in the heart of Loftus and in close proximity to the train station, bus service, schools, shops and other local amenities. This property is ready for you to move in, unpack and relax.

Features Include:

- • 2 generous bedrooms with built-in robes and modern styling
- • Living area with split system air-conditioning
- • Modern kitchen with granite benchtops and European appliances including dishwasher
- • Spacious yard for the dog, the kids or a veggie patch
- • Undercover entertaining overlooking an oversized sunny rear yard complete with deck, paved area, pergola and café blinds
- • Other features include garage with internal access, garden shed, Foxtel outlets, new curtains and new carpets

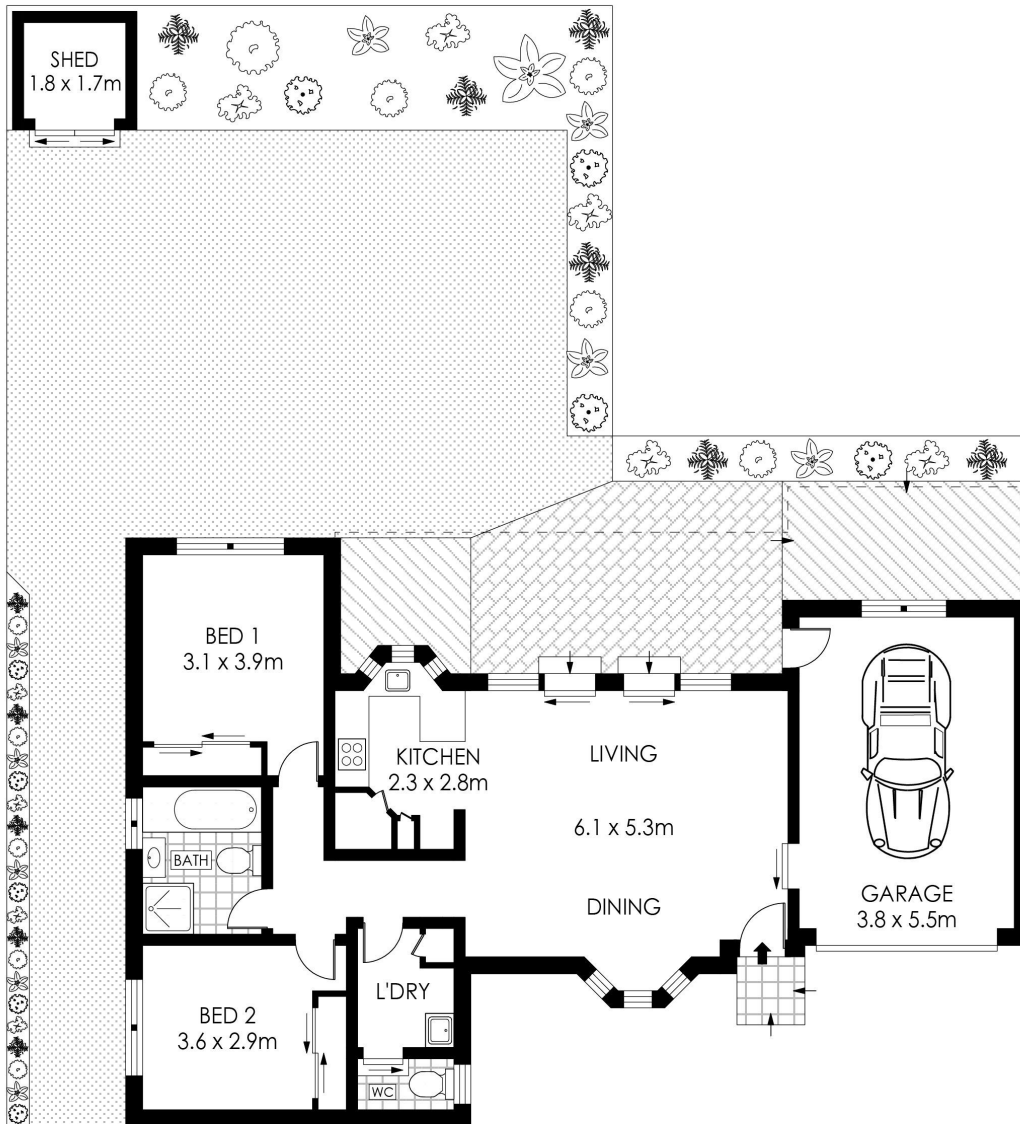
Total Lot Size: 141m2 (incl garage)

Guide \$720,000-\$760,000

Type : Villa
Sold Date : Wednesday, 17th July 2019

Derin Hill
0295452220

Sebastian Viteri
0295452220



GROUND FLOOR



PLANS SHOWN ONLY INDICATIVE OF LAYOUT. DIMENSIONS ARE APPROXIMATE.
Floor plans by www.remaustralia.com
Ref. No: 13388

Hill & Viteri
PROPERTY

9545 2220
hillandviteriproperty.com.au



14/149 LOFTUS AVENUE

LOFTUS

14/149-151 Loftus Avenue, Loftus NSW