



11 Bodalla Crescent Bangor, NSW



More Than Meets The Eye - House & Flat On One Title

Nestled in a quiet leafy pocket of Bangor, on a corner block, this three bedroom single level brick residence offers more than meets the eye at first glance. The property boasts a second separate two bedroom residence which possesses an elevated position on the north eastern corner of the lot.

The main house has a great floor plan with a feeling of warmth created by the timber finishes and features:

- Spacious separate lounge and dining areas
- Generous kitchen with 20mm granite benches and ample cupboard space
- Well appointed main bathroom plus 2nd wc in laundry
- Three bedrooms are carpeted. all with built-ins and ceiling fans
- Striking hardwood floors, carpet in lounge, ducted air, down lights
- Oversized lock-up garage plus off-street parking for 1
- Covered outdoor decked entertaining area; wrap around grassed yard

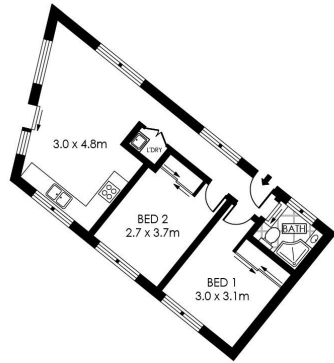
The secondary dwelling is 2 years old and ideal for those looking to accommodate extended

Auction

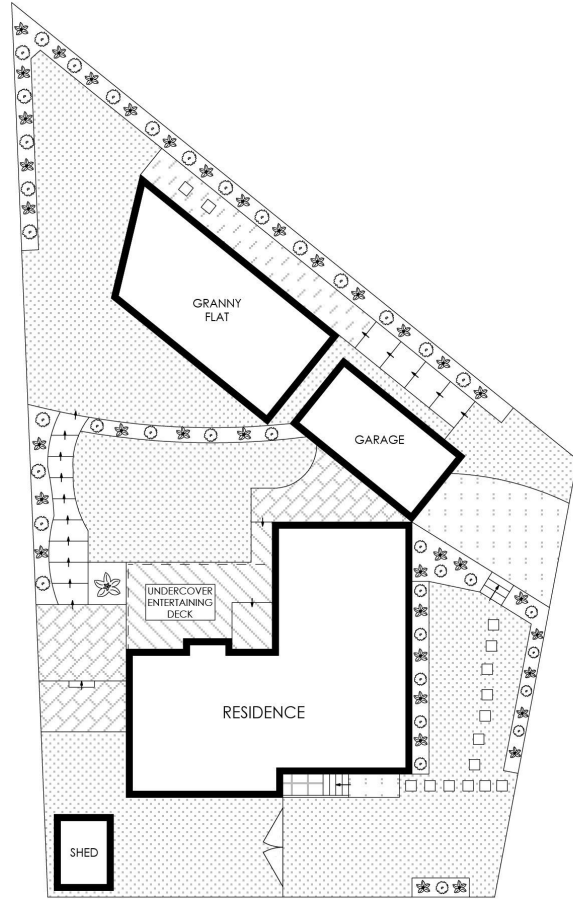
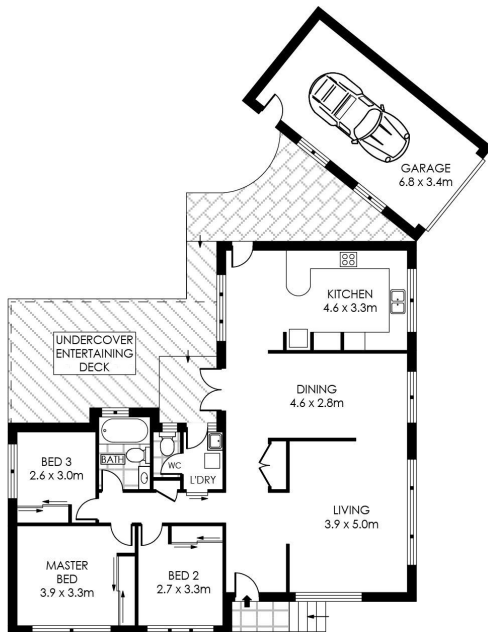
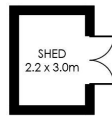
Type : House
Sold Date : Wednesday, 13th November 2019
Land : 669 m2

Sebastian Viteri

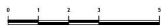
0295452220



GRANNY FLAT



SITE PLAN
(NOT TO SCALE)



SCALE (METRES)

PLANS SHOWN ONLY INDICATIVE OF LAYOUT. DIMENSIONS ARE APPROXIMATE.
Floor plans by www.remaustralia.com
Ref. No: 13681



Hill & Viteri
PROPERTY

9545 2220
hillandviteriproperty.com.au

11 BODALLA CRESCENT

BANGOR

11 Bodalla Crescent, Bangor NSW