



26/500 President Avenue Sutherland, NSW

2 1 2

## Space, Convenience & Lifestyle

A great lifestyle opportunity awaits. Situated within approximately 600m from South Village, Kirrawee and 800m to Sutherland CBD precinct. Wonderfully maintained, this apartment would suit the most discerning buyer. This first-floor apartment offers low maintenance living coupled with the convenience to amenities. Ideally suited to downsizers, first home buyers or investors.

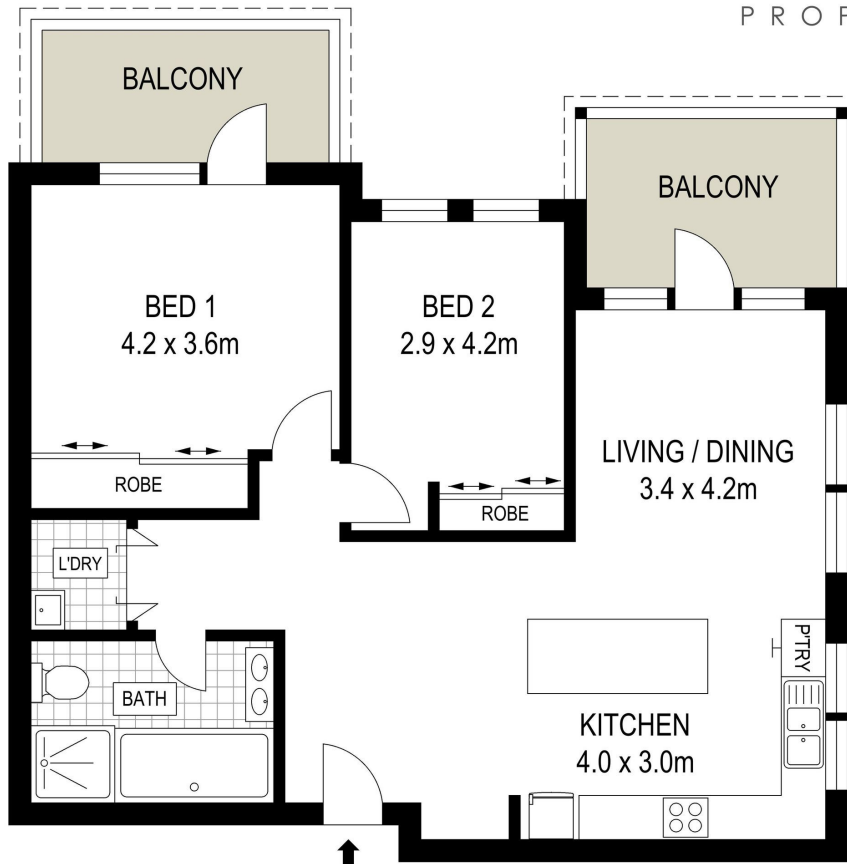
- Open plan living/dining space enjoying ample natural light
- Generous covered balcony, perfect for dining/barbeques
- Master bedroom equipped with mirrored built-in robes and access to another separate balcony
- Generous fully tiled bathroom
- Split system air-conditioning in the living area and second bedroom
- Stylish kitchen with stone benchtops, cupboard space, dishwasher and gas cooking
- Internal New York style laundry
- Double car space in secure basement parking and storage room

\$570,000 - \$610,000

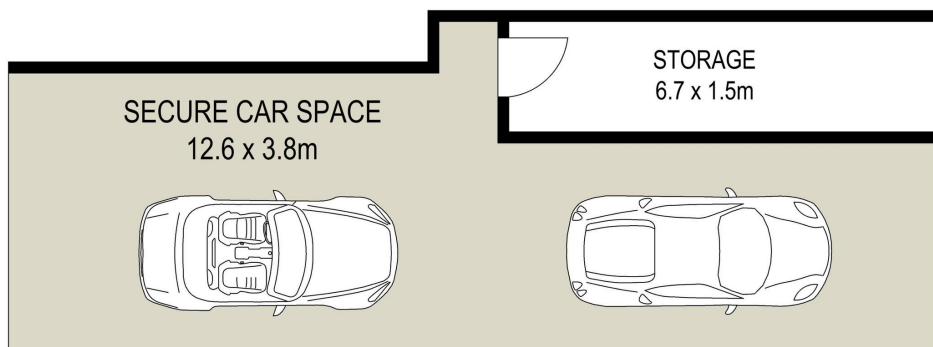
**Type** : Apartment  
**Sold Date** : Tuesday, 21st January 2020  
**Land** : 129 m2

**Sebastian Viteri**  
0295452220

**Sebastian Viteri**  
0295452220

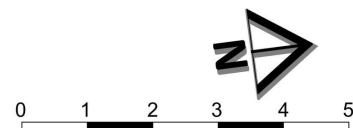


LEVEL ONE



BASEMENT

ADDRESS:  
26/500 President Avenue, Sutherland



DISCLAIMER: THIS IS FOR ILLUSTRATIVE PURPOSES ONLY, ALL DIMENSIONS ARE APPROXIMATE AND IT DOES NOT CONSTITUTE PART OF ANY LEGAL DOCUMENTS.

**26/500 President Avenue, Sutherland NSW**