



1389 Princes Highway Heathcote, NSW

3 1 1

Add Your Personal Touch

Boasting a welcoming façade and the charm of yesteryear this abode makes you feel like you are at home. Ideally suited to a young family, tradesperson looking to add value or those keen on a high profile location to advertise their own business this property is bursting with potential.

- Three bedrooms, two with built in robes
- Original bathroom with bath + 2 w/c's
- Eat-in style timber kitchen + adjacent dining room
- Two separate living areas: lounge + family room for the kids
- Great front and rear grassed yards ideal for kids and pets
- LUG garage + off street parking; split system air conditioning

Conveniently located to schools and shops, this property would suit a young and growing family to make it their own.

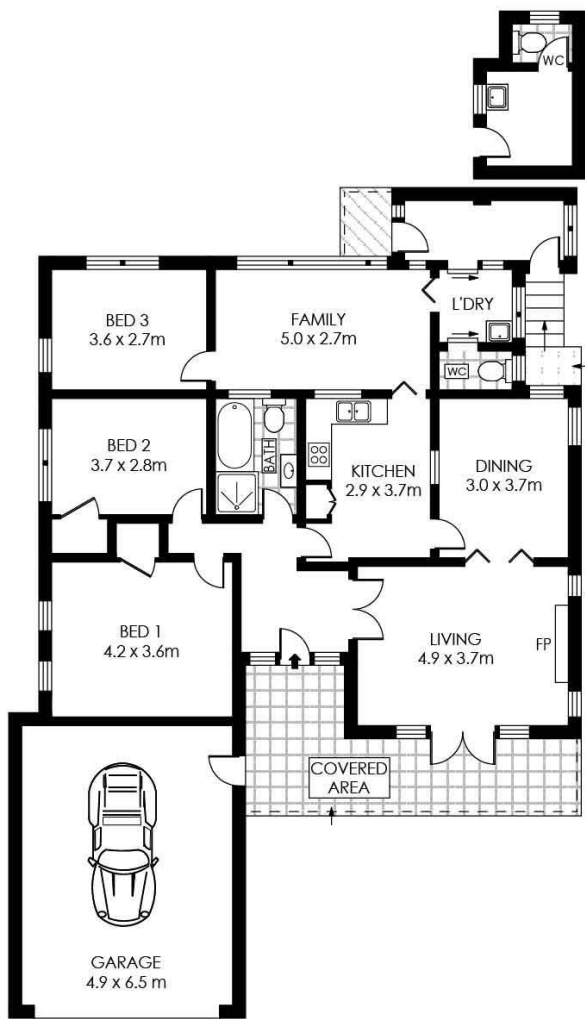
Land size - 525 m²

\$815,000

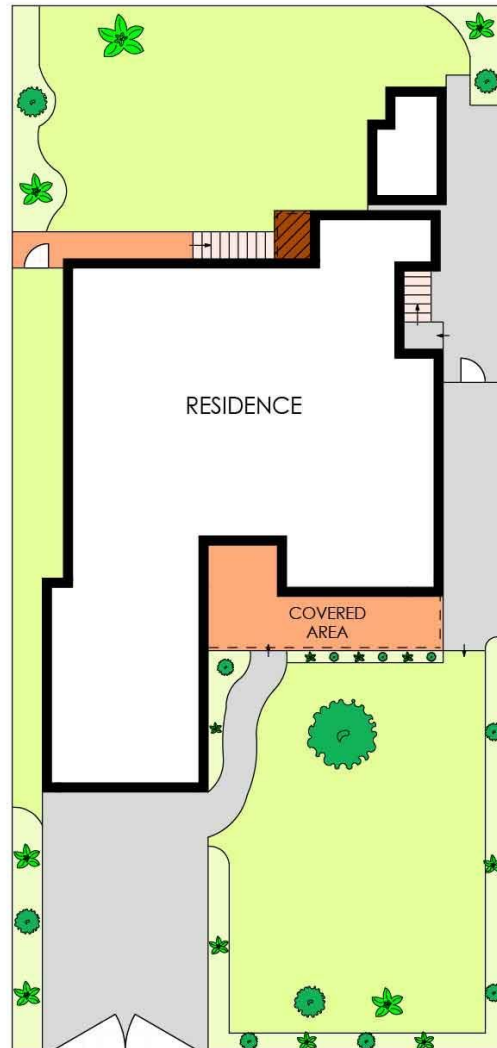
Type : House
Sold Date : Tuesday, 11th February 2020
Land : 525 m²

Sebastian Viteri

0295452220



GROUND FLOOR



SITE PLAN
(NOT TO SCALE)



SCALE (METRES)

PLANS SHOWN ONLY INDICATIVE OF LAYOUT. DIMENSIONS ARE APPROXIMATE.
Floor plans by www.remaustralia.com
Ref. No: 13828



Hill&Viteri
PROPERTY

9545 2220
hillandviteriproperty.com.au

1389 PRINCES HIGHWAY

HEATHCOTE

1389 Princes Highway, Heathcote NSW