



23/37-41 Belmont Street Sutherland, NSW

 2  2  1

When Size Meets Style & Convenience

Set in the prestigious McFarlane House complex, this large executive style apartment ticks all the boxes! Featuring brand new carpet, modern kitchen that looks over the entertainer's balcony the abode boasts a contemporary floor plan that could suit downsizers, executives commuting to the city or investors alike.

- • Two queen size bedrooms with built in robes
- • Large main bathroom and spacious well-appointed ensuite
- • Light and airy open plan living and dining
- • Modern kitchen with gas stovetop and new Bosch oven
- • Huge linen press and internal laundry
- • Generous entertainers' balcony
- • Ceiling fans in bedrooms with split system AC + fans in living area
- • Elevated green leafy outlook
- • Dual lifts in security complex with large lock up garage

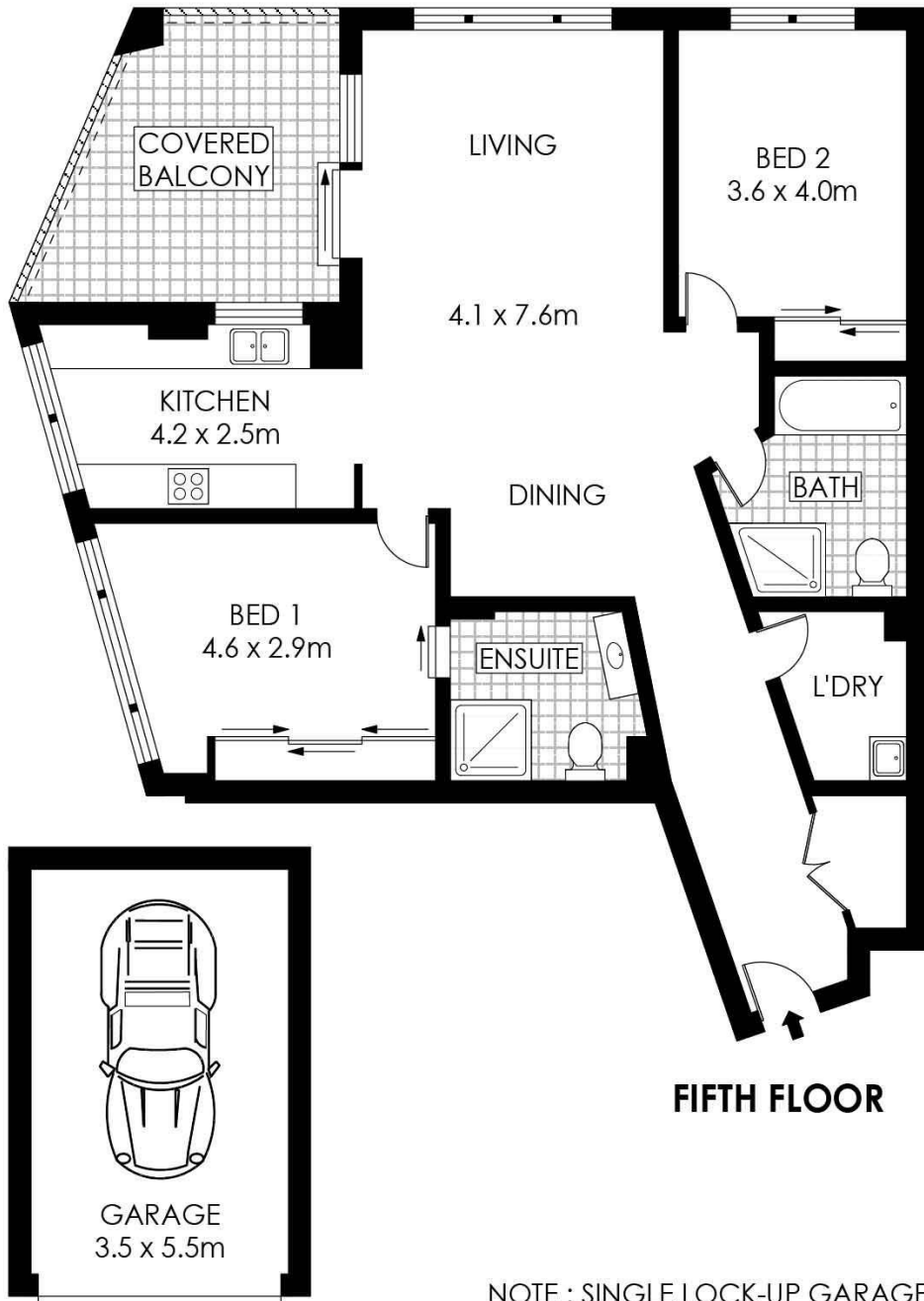
This apartment is in short walking distance to all the fantastic amenities that Sutherland CBD has to offer and is a moments walk to Peace Park, the library, restaurants, gyms and

\$700,000.00

Type : Apartment
Sold Date : Friday, 14th February 2020
Land : 132 m2

Sebastian Viteri

0295452220



FIFTH FLOOR

NOTE : SINGLE LOCK-UP GARAGE



PLANS SHOWN ONLY INDICATIVE OF LAYOUT. DIMENSIONS ARE APPROXIMATE.
Floor plans by www.remaustralia.com
Ref. No: 13836

Hill & Viteri
PROPERTY

9545 2220
hillandviteriproperty.com.au

23/37-41 BELMONT STREET

SUTHERLAND

23/37-41 Belmont Street, Sutherland NSW