



5/515 President Avenue Sutherland, NSW



## Bright, Airy & Spacious!

Set to the rear of the complex, away from President Ave, this expansive first floor apartment just gives you that feeling it's 'the one' when you walk through the door! Definitely one for the entertainer, this abode boasts a great size kitchen with breakfast bar, open plan living and dining area plus a wrap-around terrace giving you plenty of space to host a dinner party for friends or family.

The property features:

- &bull; North Western corner position offers great natural light and ventilation
- &bull; Two Queen sized bedrooms, both with mirrored built in robes
- &bull; Large open kitchen with dishwasher, pantry and ample cupboard space
- &bull; Stylishly appointed bathroom with stone top vanity + internal laundry
- &bull; Generous main balcony to the North and second balcony to the West
- &bull; Spacious open plan living and dining area with ceiling fan
- &bull; Oversized lock up garage in secure basement

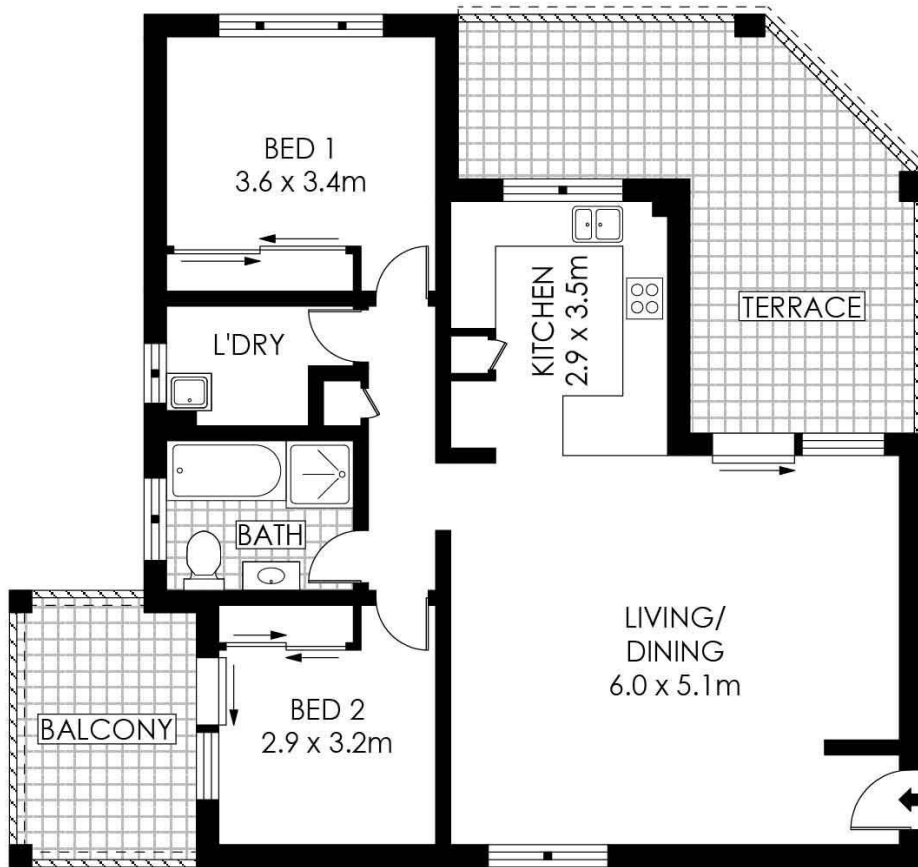
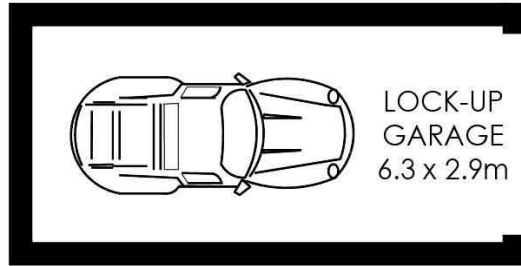
In a great location within walking distance to all the great amenities that Sutherland has to offer and only a short walk (850m) to Sutherland train station, this property would su

## Preview

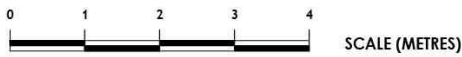
**Type** : Apartment  
**Sold Date** : Friday, 7th February 2020

**Sebastian Viteri**

0295452220



**FIRST FLOOR**



PLANS SHOWN ONLY INDICATIVE OF LAYOUT. DIMENSIONS ARE APPROXIMATE.  
Floor plans by [www.remaustralia.com](http://www.remaustralia.com)  
Ref. No: 13869

Hill & Viteri  
PROPERTY

9545 2220  
[hillandviteriproperty.com.au](http://hillandviteriproperty.com.au)



5/515 PRESIDENT AVENUE

SUTHERLAND

**5/515 President Avenue, Sutherland NSW**