



19/602 Princes Highway Kirrawee, NSW

2 1 2

## Northern Exposure - A Value Packed Property!

Note: Access via Flora Street

Boasting spacious, light filled interiors this full brick apartment with no common walls offers the size and space of it's three bedroom competitors. Set on an elevated ground floor with North, East & South aspects this property is blessed with excellent natural light and cross ventilation.

- Two queen size bedrooms, both with built-in robes
- Lounge + separate dining area that can be functioned as a study (or possible third bedroom)
- Updated bathroom with separate toilet + renovated laundry
- Timber kitchen with ample storage space + dishwasher
- Single lock up garage and separate car space in a secure basement
- North facing balcony covered balcony
- New flooring, paint and downlighting

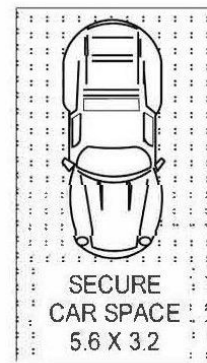
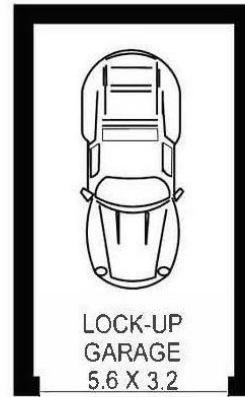
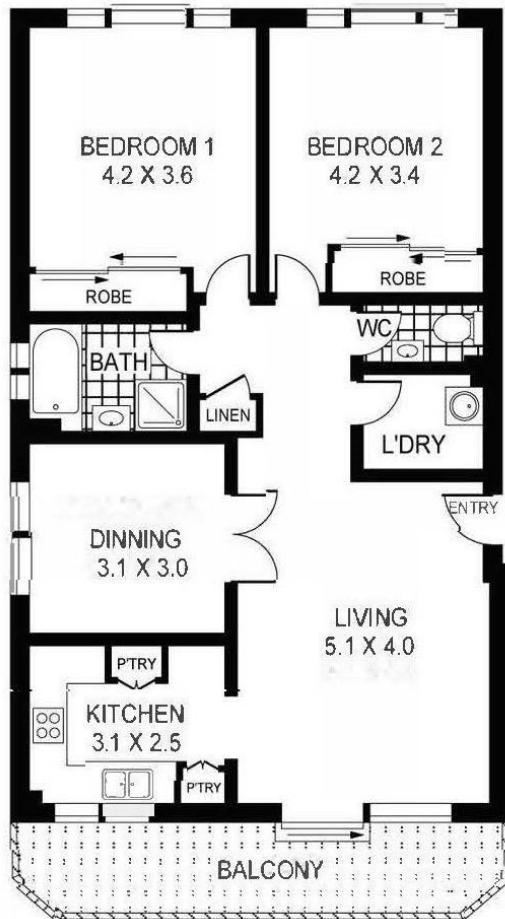
Currently leased for \$460 per week (excluding the lock up garage) until 8th October 2020,

\$615,000

**Type** : Apartment  
**Sold Date** : Friday, 12th June 2020

**Sebastian Viteri**

0295452220



ELEVATED GROUND FLOOR.



19/602 PRINCES HIGHWAY

KIRRAWEE

ALL INFORMATION CONTAINED HEREIN IS GATHERED FROM SOURCES WE BELIEVE TO BE RELIABLE. HOWEVER, WE CANNOT GUARANTEE ITS ACCURACY AND INTERESTED PERSONS SHOULD RELY ON THEIR OWN ENQUIRIES. DIMENSIONS ARE APPROXIMATE.  
Ref No: 11030

0 1 5

SCALE BAR in metres

**19/602 Princes Highway, Kirrawee NSW**