



3/27 National Avenue Loftus, NSW



Quiet, Bright & Convenient

This quaint and low maintenance villa is situated at the rear of a small complex, only has one common wall, is flooded with natural light and is situated in a quiet location.

The property features:

- Two generous sized bedrooms with built in wardrobes
- Separate spacious and airy living and dining
- Modern kitchen with lots of cupboard space
- Neat & tidy bathroom with separate shower and bath
- Private under cover patio/deck plus wrap around courtyard
- Single garage with internal access, laundry with WC
- Air conditioning, ceiling fans and linen cupboard

Located in a quiet block but is in such a convenient spot where you can stroll to the shops, parks, cafes and your choice of Loftus Train Station (approx 1km) or Sutherland Train Station (approx 1.1km).

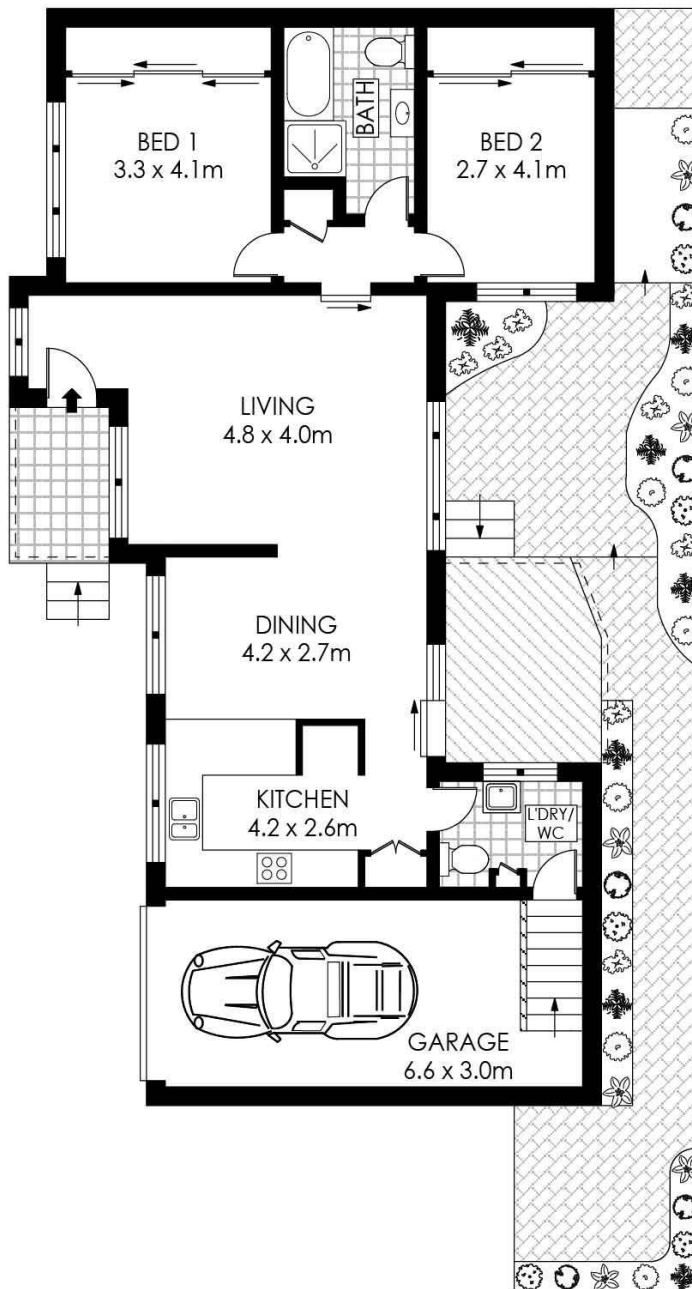
Lot size: 140m² (incl courtyard and 19.8m² garage)

Contact Agent

Type : Villa
Sold Date : Friday, 2nd October 2020
Land : 140 m2

Sebastian Viteri

0295452220



GROUND FLOOR



PLANS SHOWN ONLY INDICATIVE OF LAYOUT. DIMENSIONS ARE APPROXIMATE.
Floor plans by www.remaustralia.com
Ref. No: 14228

Hill & Viteri
PROPERTY

9545 2220
hillandviteriproperty.com.au



3/27 NATIONAL AVENUE

LOFTUS

3/27 National Avenue, Loftus NSW