



1 Poplar Place Kirrawee, NSW

3 2 1

Opportunity Knocking

Set on the high side of the street, on a corner block, this brick home has been lovingly maintained and built to take in the northern sun. Ideally suited to young families or possibly those downsizing who wish to avoid strata, this is a wonderful opportunity to make this house your home!

The property features:

- Three good size bedrooms with built in robes
- L-shaped open plan living and dining room
- Original eat in style kitchen with casual dining
- Original main bathroom with separate WC
- Detached laundry and second shower and toilet
- Detached single lock-up garage

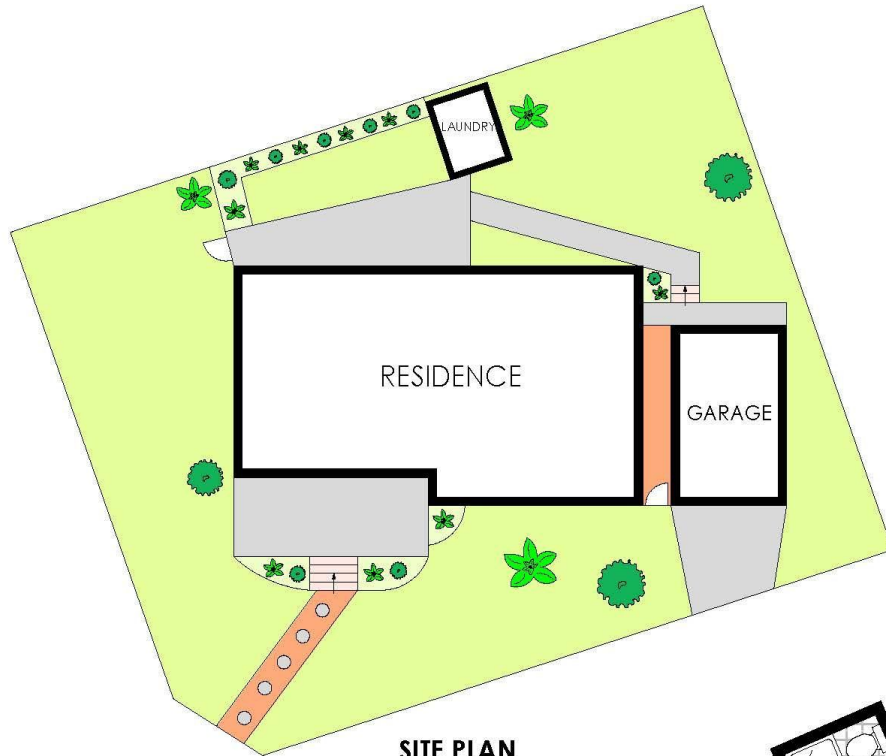
Just 850m to Kirrawee Train Station and conveniently located to an array of amenities including childcare centres, schools and the South Village precinct with major retailers including Coles & Aldi.

Contact Agent

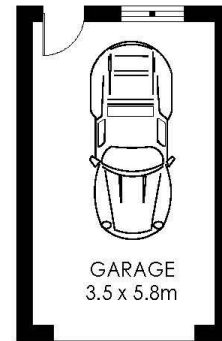
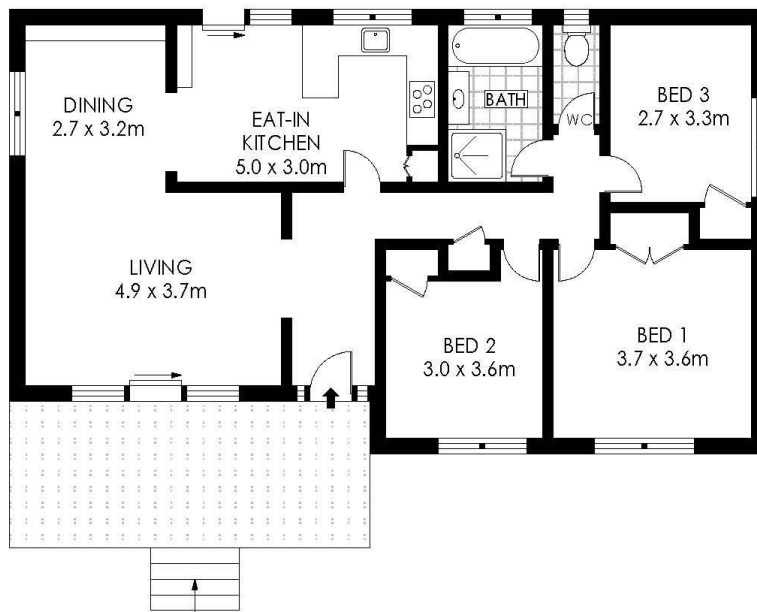
Type : House
Sold Date : Saturday, 7th November 2020
Land : 556.4 m2

Sebastian Viteri

0295452220



SITE PLAN
(NOT TO SCALE)



0 1 2 3 5
SCALE (METRES)

PLANS SHOWN ONLY INDICATIVE OF LAYOUT. DIMENSIONS ARE APPROXIMATE.
Floor plans by www.remaustralia.com
Ref. No: 14282

Hill & Viteri
PROPERTY

9545 2220
hillandviteriproperty.com.au



1 POPLAR PLACE

KIRRAWEE

1 Poplar Place, Kirrawee NSW