



25 Tenth Avenue Loftus, NSW

 4
  2
  2

## Large or Blended Family Home

If you are looking for the size and space to accommodate a large family or potentially two families, this could be the one you have been looking for. Nestled in a cul-de-sac, yet just 350m to Loftus train station, this generously proportioned abode is waiting for its next owner to revitalise it.

The property features:

- Four bedrooms plus additional home office
- Parents retreat with huge bedroom, WIR, ensuite + living area
- Modern kitchen with ample cupboard space and breakfast bar
- Multiple living and dining areas on each level
- Alfresco covered entertaining area with pool
- Level grassed yard - great for kids and pets
- Tandem carport with automatic door

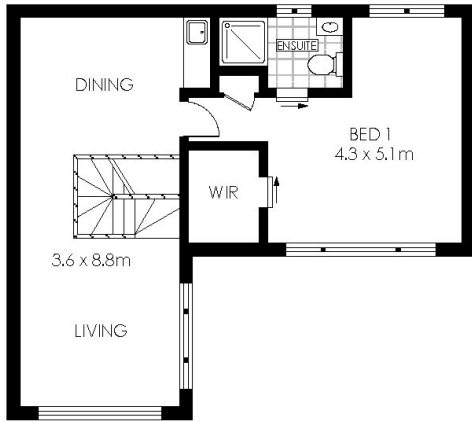
Loftus is a family friendly locale surrounded by bushland with plenty of walking trails and recreational amenities within a short distance including Sutherland Leisure centre, Waratah Park Cycling Track and the Royal National Park.

## Contact Agent

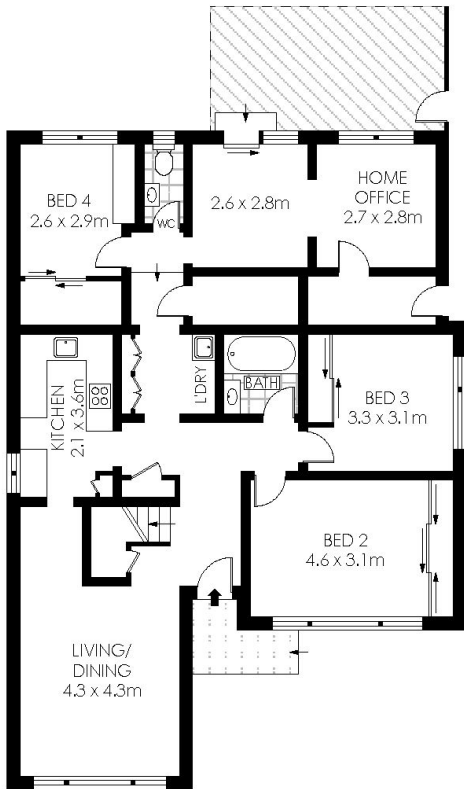
**Type** : House  
**Sold Date** : Wednesday, 23rd December 2020  
**Land** : 600.7 m2

**Sebastian Viteri**

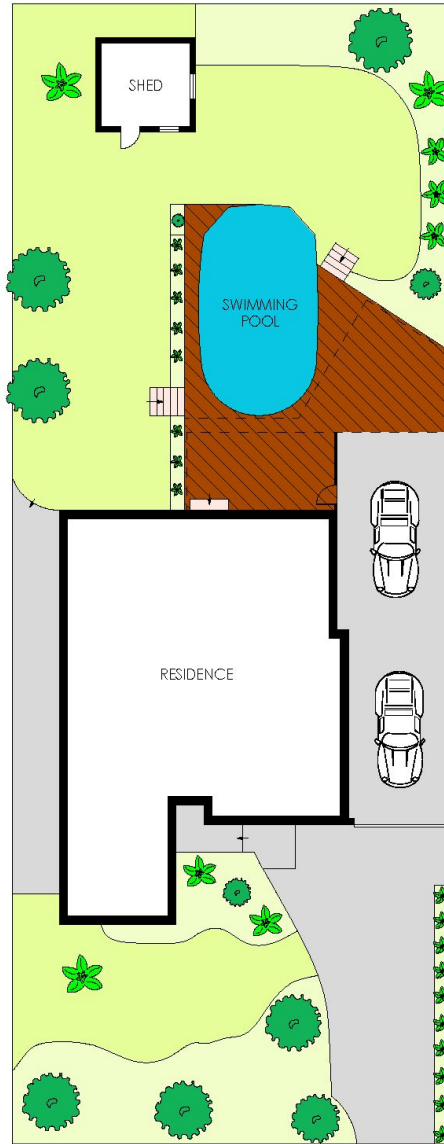
0295452220



FIRST FLOOR



GROUND FLOOR



SITE PLAN  
(NOT TO SCALE)



SCALE (METRES)

PLANS SHOWN ONLY INDICATIVE OF LAYOUT. DIMENSIONS ARE APPROXIMATE.  
Floor plans by www.remaustralia.com  
Ref. No: 14361



Hill & Viteri  
PROPERTY

9545 2220  
hillandviteriproperty.com.au

25 TENTH AVENUE

LOFTUS

25 Tenth Avenue, Loftus NSW