



11/82 Wilson Parade Heathcote, NSW

 2
  1
  1

Low Maintenance Living

Tucked away at the rear of a quiet, well maintained complex, this two bedroom villa is filled with natural light and is neatly appointed throughout. A lovely first home, or perfect for those looking to downsize to a private, low maintenance and easily accessible villa.

The property features:

- Two queen size bedrooms with BIR
- L shaped living and dining
- Kitchen with ample bench and cupboard space
- Neat & tidy bathroom with separate bath
- Private sun filled entertaining courtyard
- Lock up garage with storage and undercover access to home

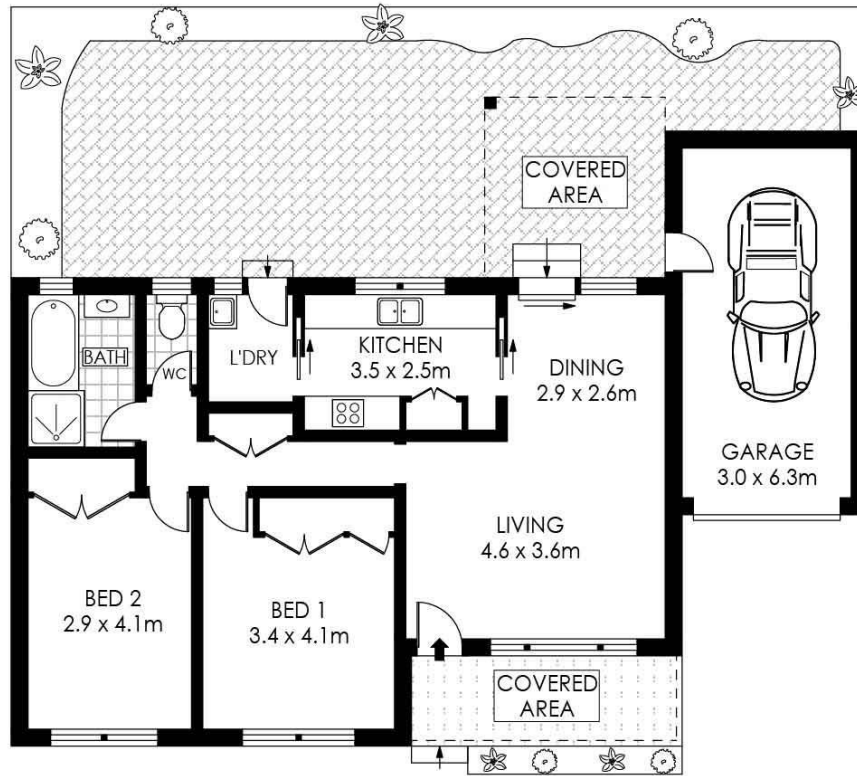
This family friendly complex is set in a quiet leafy pocket of Heathcote East. The kids will love the secluded park lands of Sesquicentenary Park - just 150m walk away. Enjoy close proximity to the train station and easy access to the National Park, trips down the coast

Contact Agent

Type : Villa
Sold Date : Friday, 11th December 2020

Sebastian Viteri

0295452220



GROUND FLOOR



PLANS SHOWN ONLY INDICATIVE OF LAYOUT. DIMENSIONS ARE APPROXIMATE.
Floor plans by www.remaustralia.com
Ref. No: 14363

Hill & Viteri
PROPERTY

9545 2220
hillandviteriproperty.com.au



11/82 WILSON PARADE

HEATHCOTE

11/82 Wilson Parade, Heathcote NSW