



36 National Avenue Loftus, NSW



The Opportunities Are Endless

This large family home is a great opportunity for a growing family or those looking to upsize. Set on a large block of 746m² with a huge 6m x 7m workshop - tradies and those looking for additional work space will be thrilled! It may also suit those looking to re-build or possibly a great opportunity for development S.T.C.A.

The property features:

- Four generously sized bedrooms, main with ensuite and walk-in robe
- Open plan family/rumpus area in the heart of the home
- Multiple living area's to suit a growing family
- Large open kitchen with skylight and ample cupboard space
- Formal and informal dining area's
- Large outdoor entertaining area including inground pool

Zoning Information

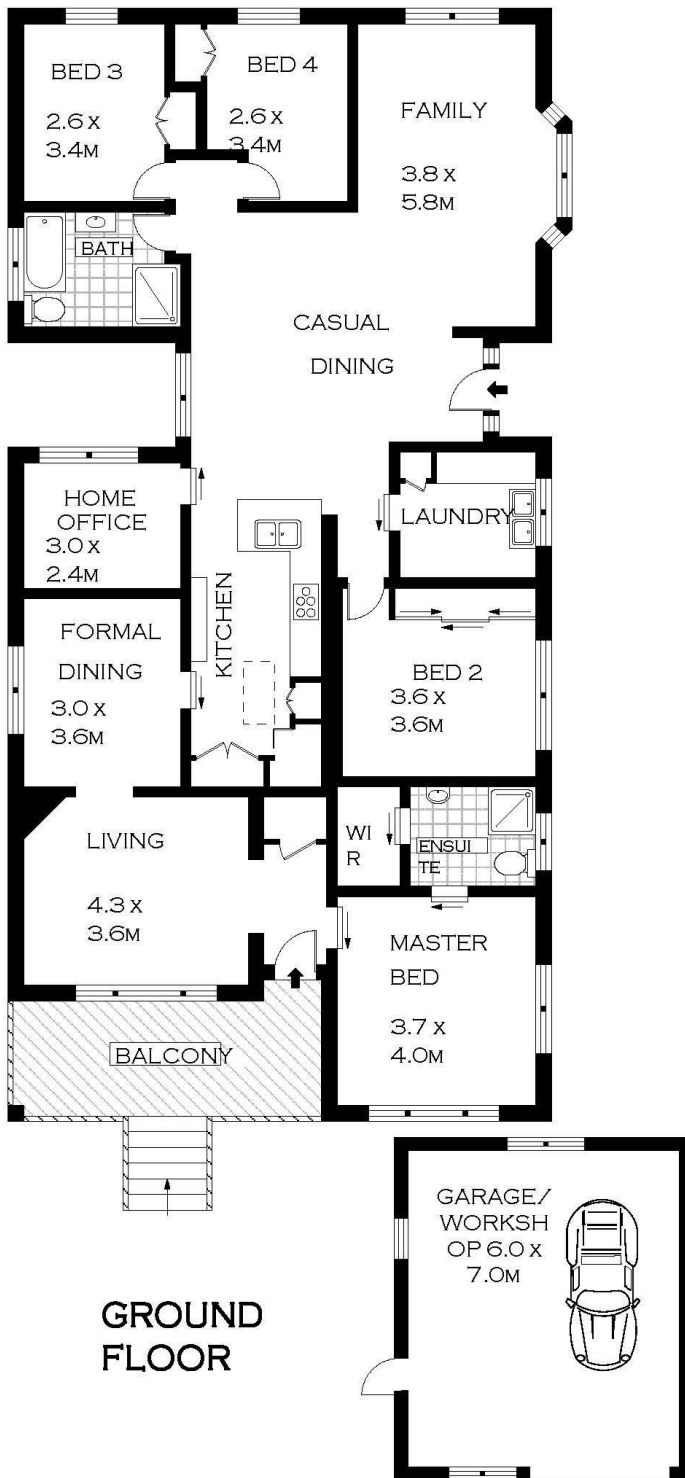
- Zoned R2, Low density residential
- Total land size: 746.1m²
- Frontage: 14.9m

Contact Agent

Type : House
Sold Date : Saturday, 13th February 2021
Land : 746 m2

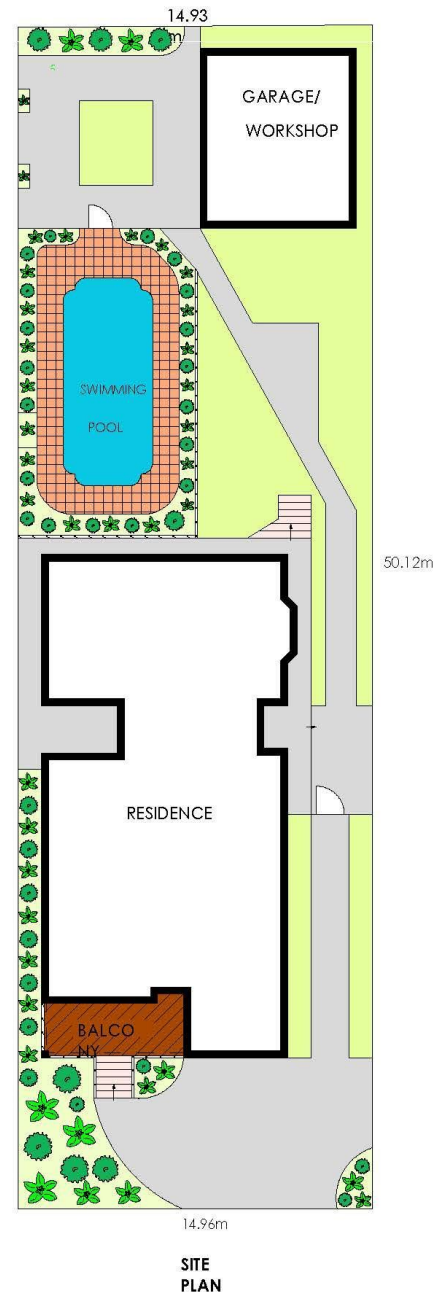
Sebastian Viteri

0295452220



SCALE (METRES)

PLANS SHOWN ONLY INDICATIVE OF LAYOUT. DIMENSIONS ARE APPROXIMATE.
Floor plans by www.remaustralia.com
Ref. No: 14376



Hill & Viteri
PROPERTY

9545 2220
hillandviteriproperty.com.au

36 NATIONAL AVENUE

LOFTUS

36 National Avenue, Loftus NSW