



6/41 Oxley Avenue Jannali, NSW



Conveniently located

Perfectly situated in the heart of Jannali, this top floor north facing apartment is set within a small complex of eight. Presenting an abundance of natural light with open plan living area, it presents a fantastic opportunity for first home buyers or investors alike.

- Large master bedroom with spacious BIR's with additional linen closet
- Ensuite with combined bath/shower plus laundry
- Neat and tidy open plan kitchen
- L shape living, dining and kitchen area presenting a good use of space
- Entrance via your own private balcony
- Registered car space

This apartment is set in a fabulous location, just a 350m walk away from Jannali train station, cafes and shops.

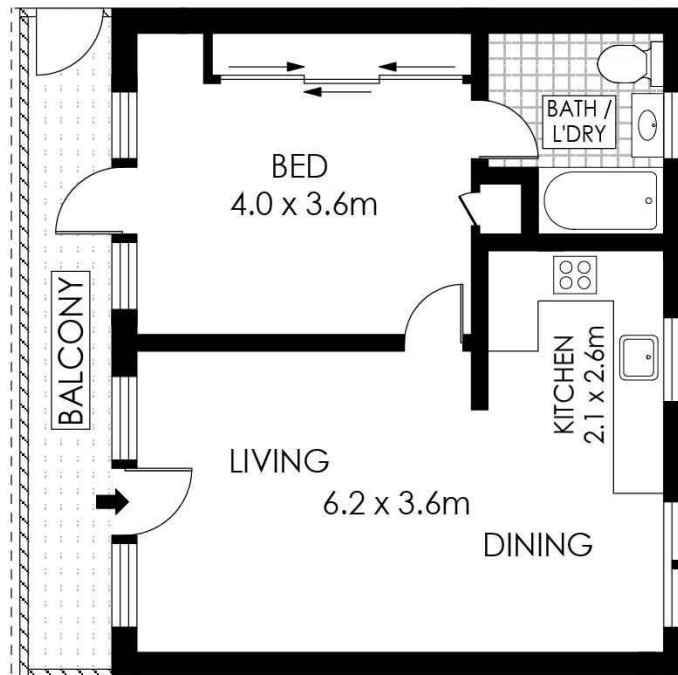
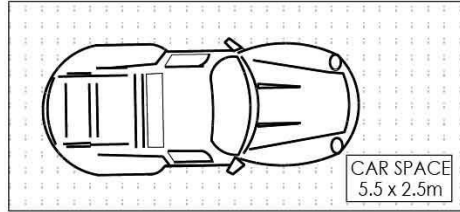
Lot size: 78.20m² (59.7m² + 18.5m² car space)

Contact Agent

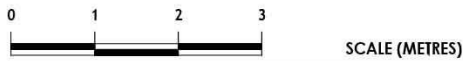
Type : Apartment
Sold Date : Thursday, 18th February 2021

Sebastian Viteri

0295452220



TOP FLOOR



PLANS SHOWN ONLY INDICATIVE OF LAYOUT. DIMENSIONS ARE APPROXIMATE.
Floor plans by www.remaustralia.com
Ref. No: 14386



Hill & Viteri
PROPERTY

9545 2220
hillandviteriproperty.com.au

6/41 OXLEY AVENUE

JANNALI

6/41 Oxley Avenue, Jannali NSW