



8 Geoffrey Crescent Loftus, NSW

3 2 2

Idyllic Family Entertainer!

Striking from the street and superbly appointed throughout, this immaculate three-bedroom residence boasts light filled interiors and an open floor plan that flows seamlessly from indoor to out. Offering the features you'd expect in a four bedroom home this abode is ready for its new owner to simply move in and enjoy. This truly is the ideal family entertainer.

The property features:

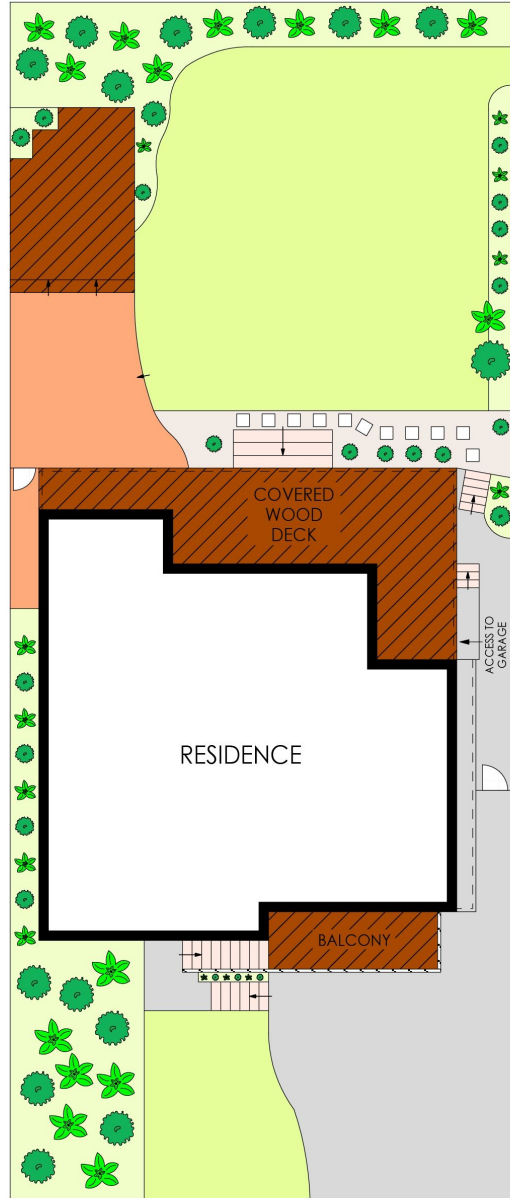
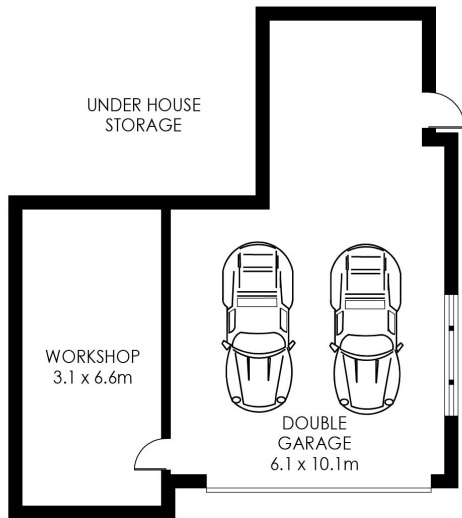
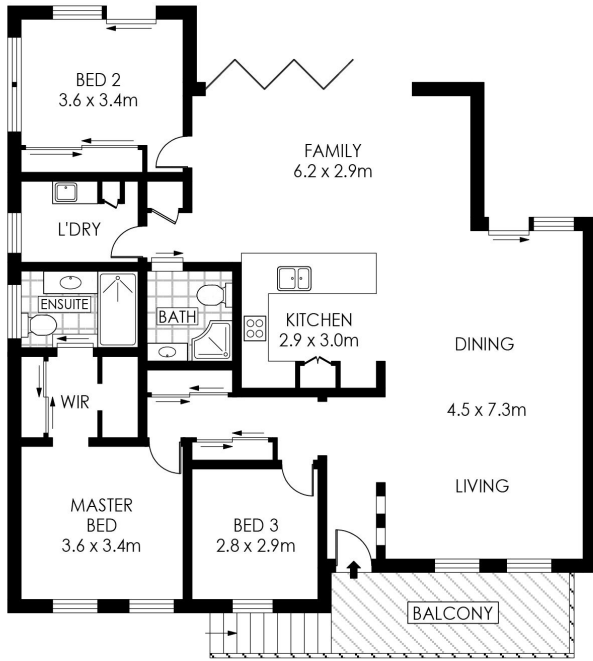
- Three bedrooms, master bedroom with en-suite and walk-in robe
- Elegant main bathroom and en-suite boast quality fixtures and are like finished
- Two separate living areas; lounge to the front and family area to the rear
- Expansive kitchen features stone benches, quality appliances & ample storage
- Dining spaces include a generous indoor area plus multiple alfresco options
- A spacious covered outdoor entertaining area wraps around to the BBQ area
- A fully fenced backyard with manicured gardens and level grassed yard
- Double lock up garage with auto door + storage, work shop and off-street parking
- Other features include timber floors, split system air conditioning, ceiling fans, sky l

Contact Agent

Type : House
Sold Date : Saturday, 6th March 2021
Land : 556.4 m2

Sebastian Viteri

0295452220



SITE PLAN
(NOT TO SCALE)



PLANS SHOWN ONLY INDICATIVE OF LAYOUT. DIMENSIONS ARE APPROXIMATE.
Floor plans by www.remaustralia.com
Ref. No: 14439



Hill & Viteri
PROPERTY

9545 2220
hillandviteriproperty.com.au

8 GEOFFREY CRESCENT

LOFTUS

8 Geoffrey Crescent, Loftus NSW