



423 President Avenue Kirrawee, NSW

 3
  1
  2

## Stylish & Convenient

Stylishly renovated throughout, this abode is the ultimate in low maintenance living. Ready for its new owner to simply move in and enjoy this property is ideal as a first home or for a young family but could suit those looking to downsize.

The property features:

- Three generous bedrooms are on offer, all carpeted with ample built-in wardrobes
- Open layout ties in the lounge, dining and expansive kitchen with island breakfast bar
- Kitchen features stone benches, plentiful storage + Bosch pyrolytic oven & gas cooktop
- Stylishly appointed bathroom with separate shower & bath + separate second toilet
- Spacious covered rear entertaining area + low maintenance rear yard with garden shed
- Parking for two cars in the front + covered entertaining doubles as a tandem carport
- Daikin ducted reverse cycle air-con + updated lighting, blinds and flooring coverings

Located just 400m to Kirrawee train station this property is ultra convenient! Within

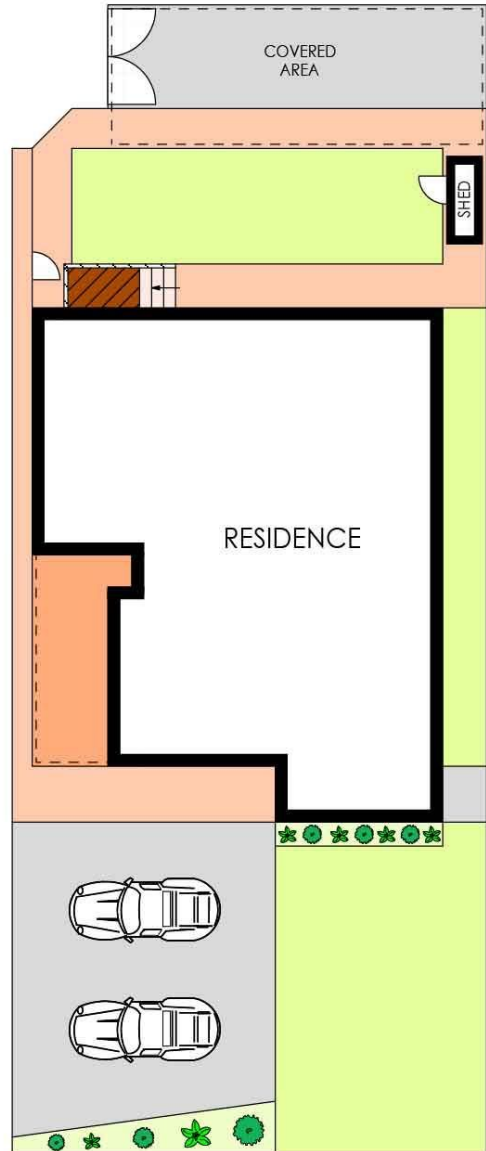
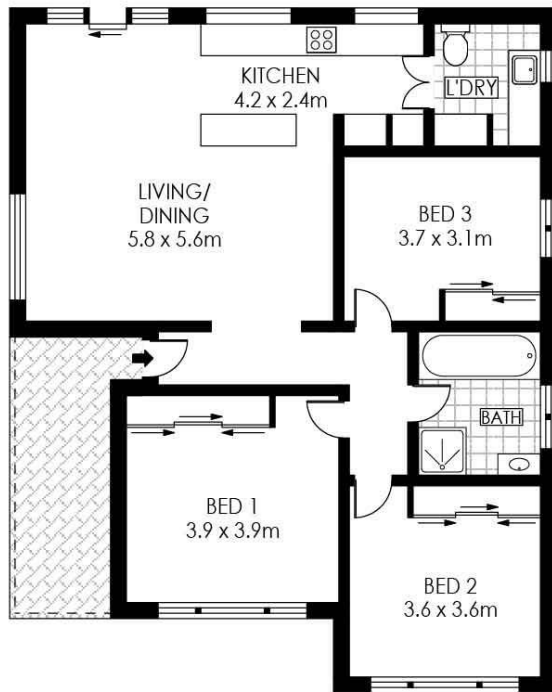
[www.hillandviteriproperty.com.au](http://www.hillandviteriproperty.com.au)

## Contact Agent

**Type** : House  
**Sold Date** : Thursday, 18th March 2021

**Sebastian Viteri**  
 02 9545 2220

**Sean Donovan**  
 02 9545 2220



**SITE PLAN**  
(NOT TO SCALE)



PLANS SHOWN ONLY INDICATIVE OF LAYOUT. DIMENSIONS ARE APPROXIMATE.  
Floor plans by [www.remaustralia.com](http://www.remaustralia.com)  
Ref. No: 14440



Hill & Viteri  
PROPERTY

9545 2220  
[hillandviteriproperty.com.au](http://hillandviteriproperty.com.au)

423 PRESIDENT AVENUE

KIRRAWEE

**423 President Avenue, Kirrawee NSW**