



423 President Avenue Kirrawee, NSW

3 1 2

Stylish & Convenient

Stylishly renovated throughout, this abode is the ultimate in low maintenance living. Ready for it's new owner to simply move in and enjoy this property is ideal as a first home or for a young family but could suit those looking to downsize.

The property features:

- Three generous bedrooms are on offer, all carpeted with ample built-in wardrobes
- Open layout ties in the lounge, dining and expansive kitchen with island breakfast bar
- Kitchen features stone benches, plentiful storage + Bosch pyrolytic oven & gas cooktop
- Stylishly appointed bathroom with separate shower & bath + separate second toilet
- Spacious covered rear entertaining area + low maintenance rear yard with garden shed
- Parking for two cars in the front + covered entertaining doubles as a tandem carport
- Daikin ducted reverse cycle air-con + updated lighting, blinds and flooring coverings

Located just 400m to Kirrawee train station this property is ultra convenient! Within

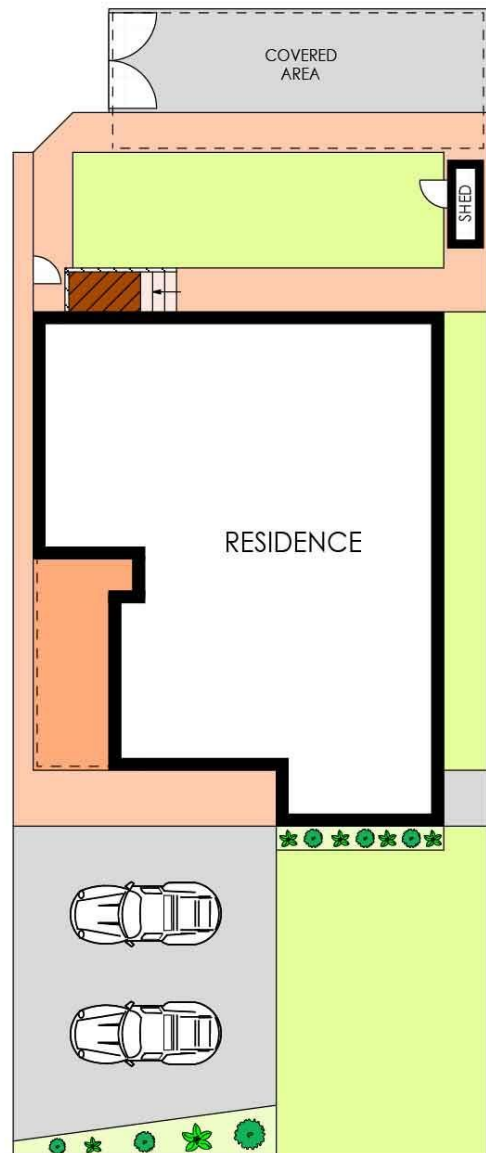
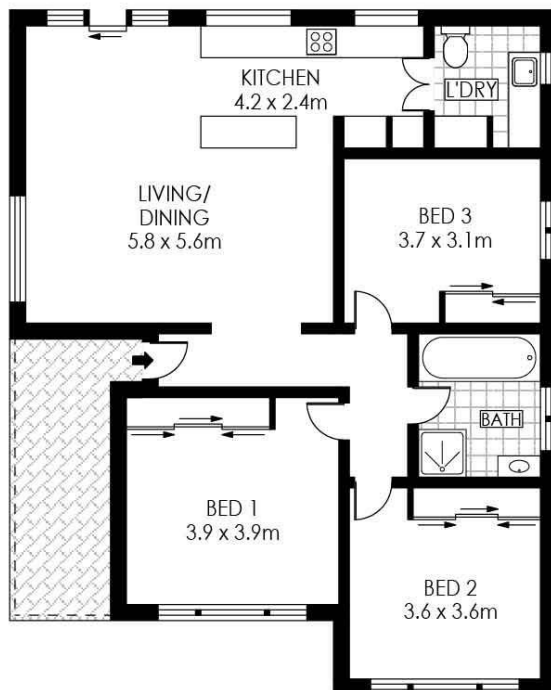
www.hillandviteriproperty.com.au

Contact Agent

Type : House
Sold Date : Thursday, 18th March 2021

Sebastian Viteri

0295452220



SITE PLAN
(NOT TO SCALE)



PLANS SHOWN ONLY INDICATIVE OF LAYOUT. DIMENSIONS ARE APPROXIMATE.
Floor plans by www.remaustralia.com
Ref. No: 14440

Hill & Viteri
PROPERTY

9545 2220
hillandviteriproperty.com.au



423 PRESIDENT AVENUE

KIRRAWEE

423 President Avenue, Kirrawee NSW