



99 Corinth Road Heathcote NSW

3 1

This brick veneer home is set in a leafy location and offers a peaceful retreat from the hustle and bustle. Boasting a level grassed yard with plenty of room for children and pets plus space for the addition of a pool (STCA), this abode is ideal for the growing family wanting to make the most of the outdoors.

Features:

- 3 bedrooms, master with built in robe
- Open plan, tiled living & dining areas
- Undercover, paved alfresco entertaining space
- Kitchen with direct access to alfresco & backyard
- Fenced level grassed backyard, level grassed front yard
- Split system air conditioning
- Ample off-street parking, external storage sheds

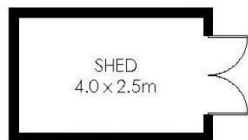
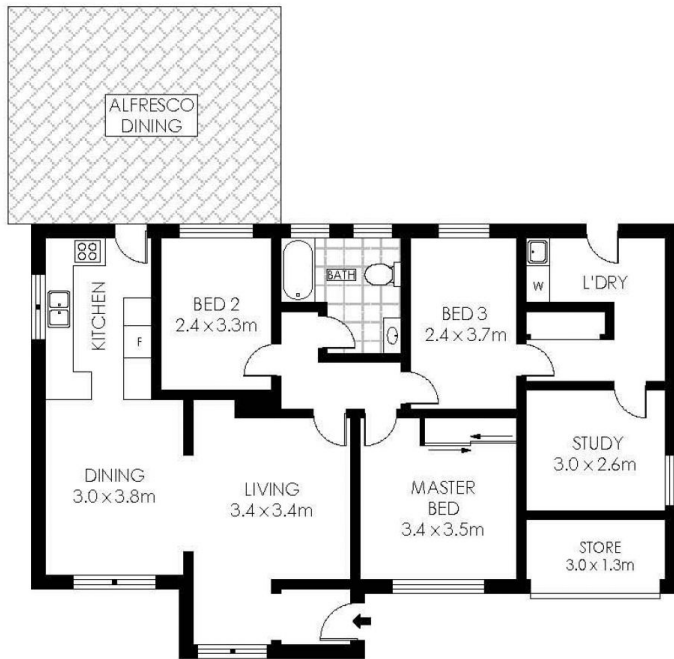
Type : House

View : <https://www.hillandviteriproperty.com.au/7053950>



Sebastian Viteri
(02) 9545 2220

[For full version visit the website](https://www.hillandviteriproperty.com.au)



SITE PLAN
(NOT TO SCALE)



SCALE (METRES)

PLANS SHOWN ONLY INDICATIVE OF LAYOUT. DIMENSIONS ARE APPROXIMATE.
Floor plans by www.remaustralia.com
Ref. No: 15256



99 CORINTH ROAD, HEATHCOTE