



17/50-54 The Grand Parade Sutherland NSW

2 1 1

Offering a north facing top floor apartment, centrally located in the heart of Sutherland and is perfect for those looking for a convenient, yet low maintenance approach to living. This abode is ideal for first home buyers, downsizers or investors alike.

Type : Apartment
Price : \$ 710,000
View : <https://www.hillandviteriproperty.com.au/8137831>

* Entry via Cambridge Lane

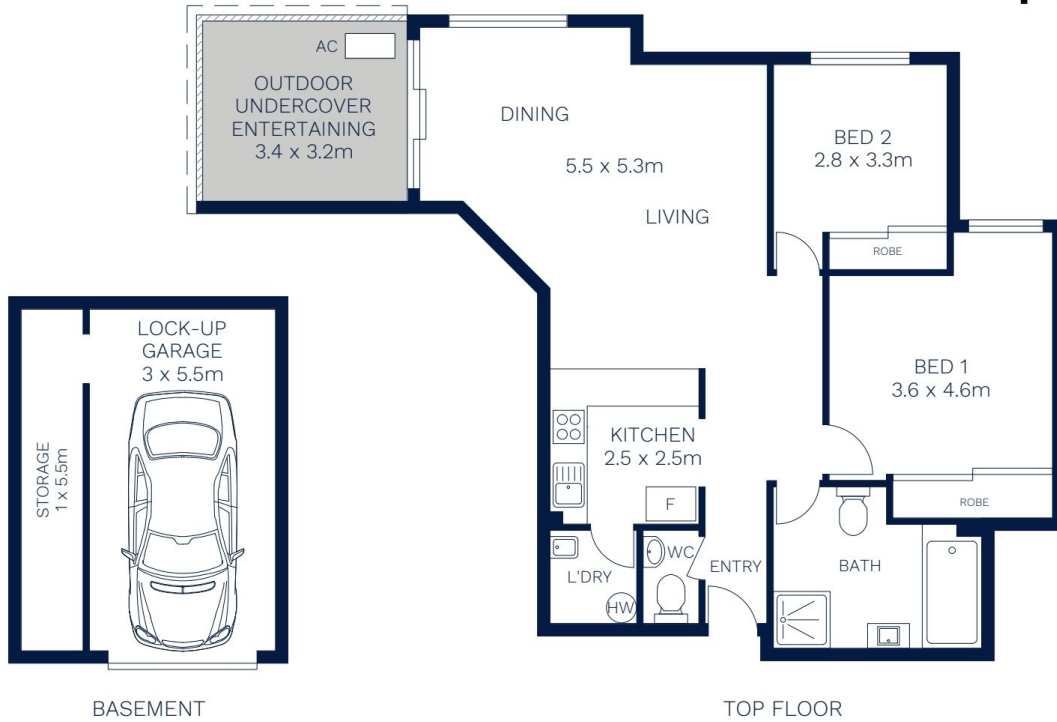
Property Features:

- Well-appointed kitchen with breakfast bar and ample bench space
- Open-plan living and dining area with air conditioning
- Great sized north facing covered entertainers' balcony
- Two ample-sized bedrooms with mirrored built-in robes
- Bathroom with separate bath and shower, additional



Sebastian Viteri
(02) 9545 2220

[For full version visit the website](https://www.hillandviteriproperty.com.au)



Scale in metres. Indicative only. Dimensions area approximate. All information contained herein is gathered from sources we believe to be reliable. However we cannot guarantee its accuracy and interested persons should rely on their own enquiries.

17/50-54 The Grand Parade, Sutherland