



13/602-608 Princes Highway Kirrawee NSW

2  1  1 

This all-brick complex, situated in a prime Kirrawee location, offers a two-bedroom ground floor apartment that promises convenience and low maintenance living. Offering South Village only 300m and Kirrawee Station is 400m away. It's an excellent choice for first-time homebuyers, those looking to downsize, and investors.

Type : Apartment

Price : \$ 940,000

View : <https://www.hillandviteriproperty.com.au/8176379>

*Entry via Flora Street

Property features:

- Freshly painted throughout
- Combined living and dining area
- Two bedrooms, both with built-in-robos
- Original well maintained kitchen
- Spacious terrace with leafy outlook

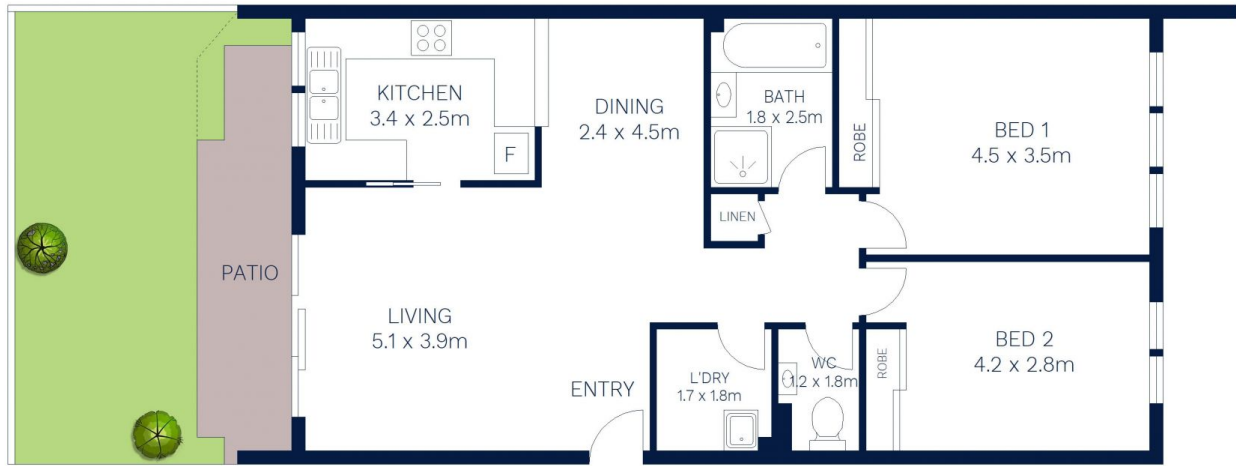


Derin Hill
02 9545 2220

[For full version visit the website](https://www.hillandviteriproperty.com.au)



BASEMENT



GROUND FLOOR



Scale in metres. Indicative only. Dimensions are approximate. All information contained herein is gathered from sources we believe to be reliable. However we cannot guarantee its accuracy and interested persons should rely on their own enquiries.

13/602 Princes Highway, Kirrawee